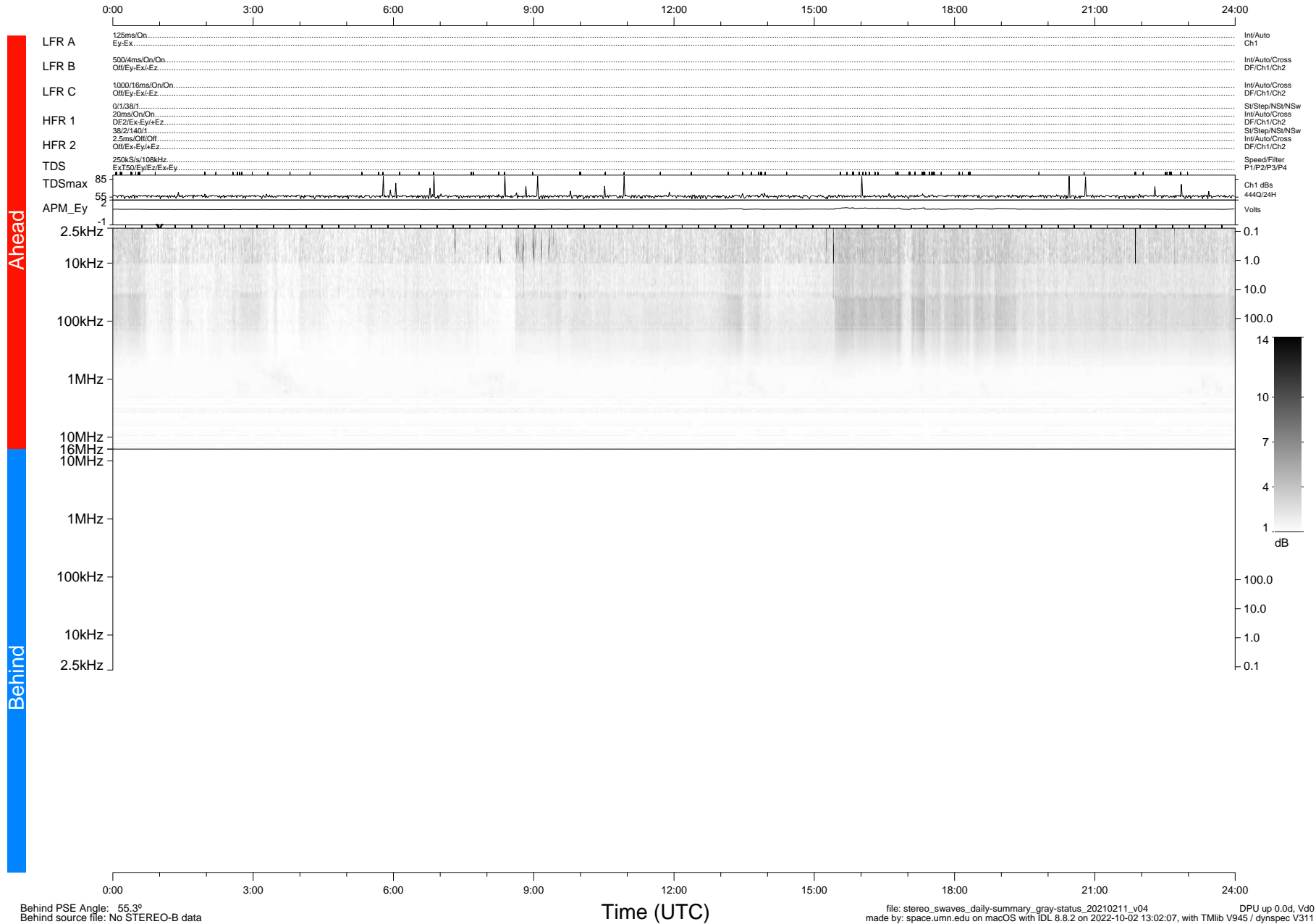


STEREO/WAVES Daily Summary - 11-Feb-2021 (DOY 042)

Ahead source file: swaves_ahead_2021_042_1_05.fin (Recovery: 100.0% HK, 120% Pkts)
 Ahead PSE Angle: -56.1°

DPU up 2045.9d, V412d32



Behind PSE Angle: 55.3°
 Behind source file: No STEREO-B data

Time (UTC)

file: stereo_swaves_daily-summary_gray-status_20210211_v04
 made by: space.umn.edu on macOS with IDL 8.8.2 on 2022-10-02 13:02:07, with TLib V945 / dynspec V311
 DPU up 0.0d, Vd0