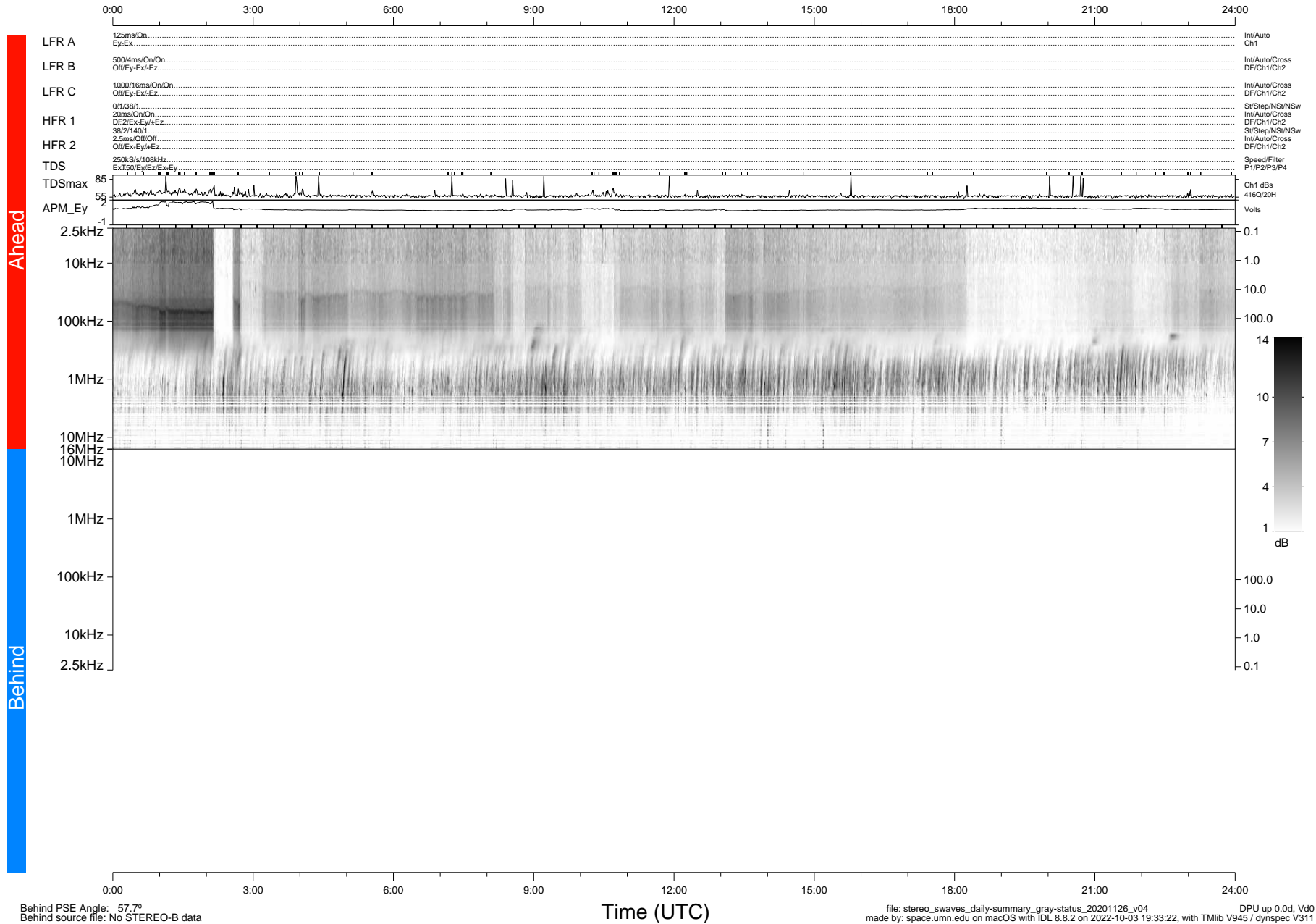


STEREO/WAVES Daily Summary - 26-Nov-2020 (DOY 331)

Ahead source file: swaves_ahead_2020_331_1_05.fin (Recovery: 100.0% HK, 115% Pkts)
 Ahead PSE Angle: -58.1°

DPU up 1968.9d, V412d32



Behind PSE Angle: 57.7°
 Behind source file: No STEREO-B data

Time (UTC)

file: stereo_swaves_daily-summary_gray-status_20201126_v04 DPU up 0.0d, Vd0
 made by: space.umn.edu on macOS with IDL 8.8.2 on 2022-10-03 19:33:22, with Tlib V945 / dynspec V311