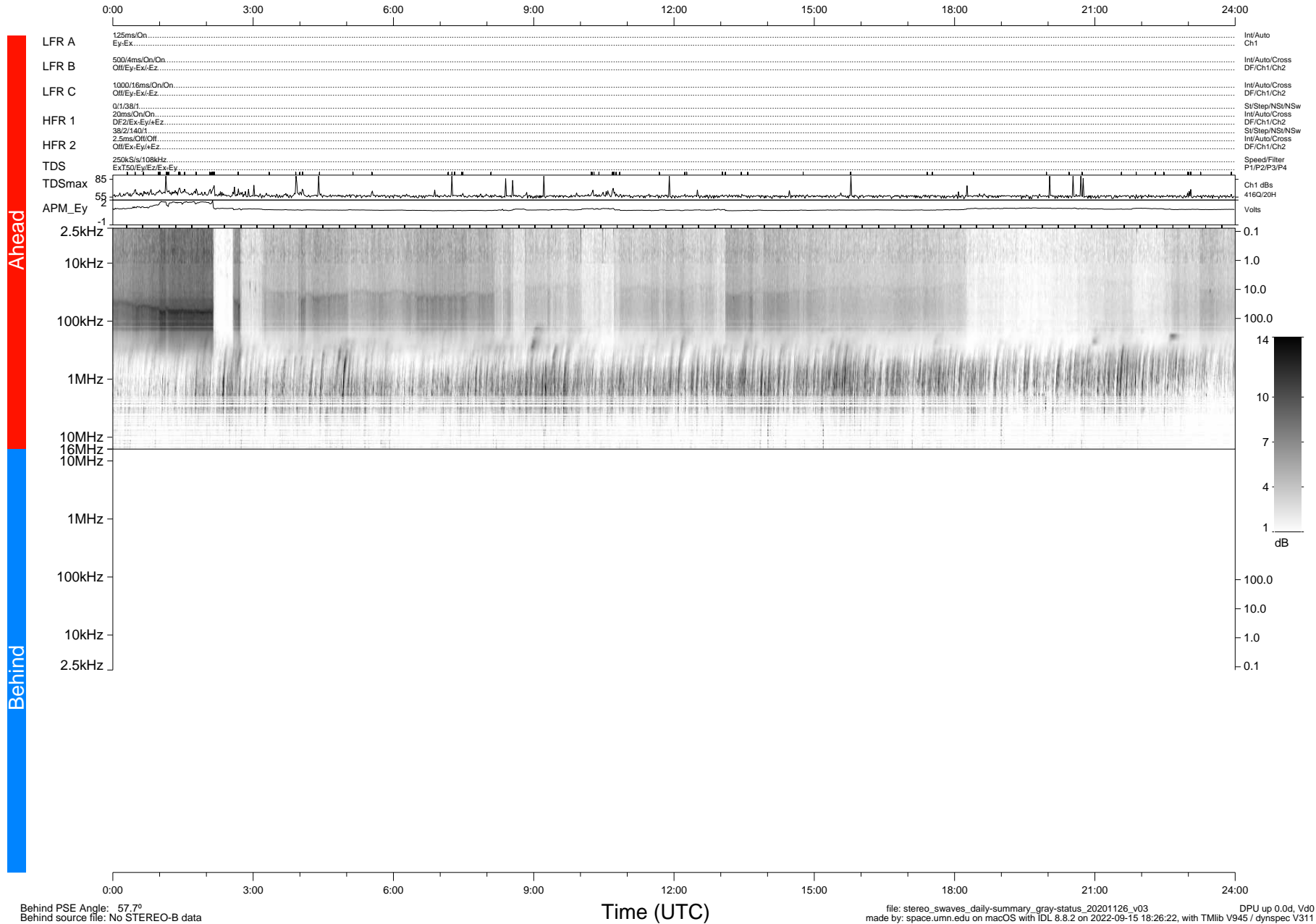


# STEREO/WAVES Daily Summary - 26-Nov-2020 (DOY 331)

Ahead source file: swaves\_ahead\_2020\_331\_1\_05.fin (Recovery: 100.0% HK, 115% Pkts)  
 Ahead PSE Angle: -58.1°

DPU up 1968.9d, V412d32



Behind PSE Angle: 57.7°  
 Behind source file: No STEREO-B data

file: stereo\_swaves\_daily-summary\_gray-status\_20201126\_v03  
 made by: space.umn.edu on macOS with IDL 8.8.2 on 2022-09-15 18:26:22, with Tlib V945 / dynspec V311  
 DPU up 0.0d, Vd0