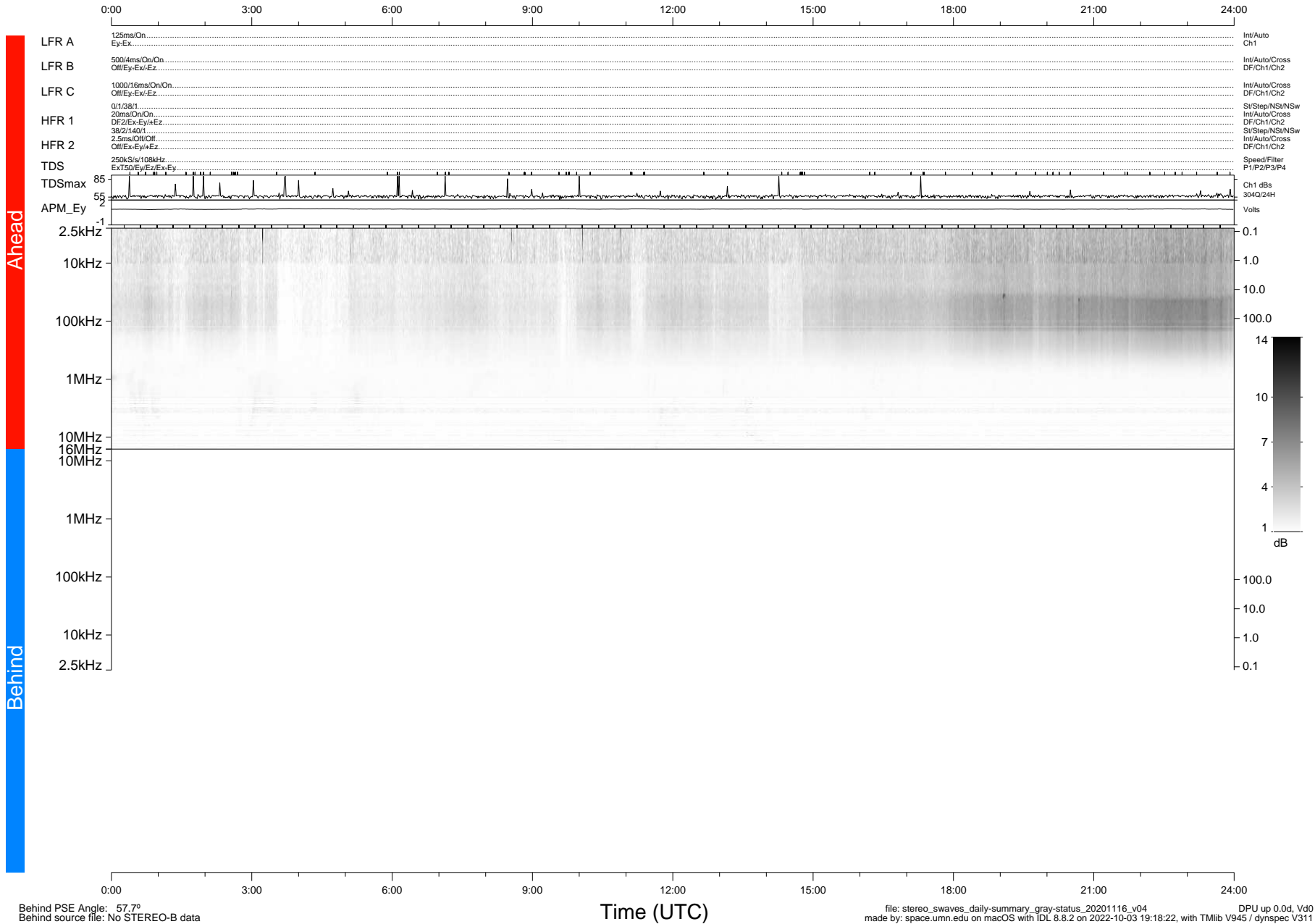


STEREO/WAVES Daily Summary - 16-Nov-2020 (DOY 321)

Ahead source file: swaves_ahead_2020_321_1_05.fin (Recovery: 100.0% HK, 99% Pkts)
 Ahead PSE Angle: -58.5°

DPU up 1958.9d, V412d32



Behind PSE Angle: 57.7°
 Behind source file: No STEREO-B data

Time (UTC)

file: stereo_swaves_daily-summary_gray-status_20201116_v04
 made by: space.umn.edu on macOS with IDL 8.8.2 on 2022-10-03 19:18:22, with Tlib V945 / dynspec V311

DPU up 0.0d, Vd0