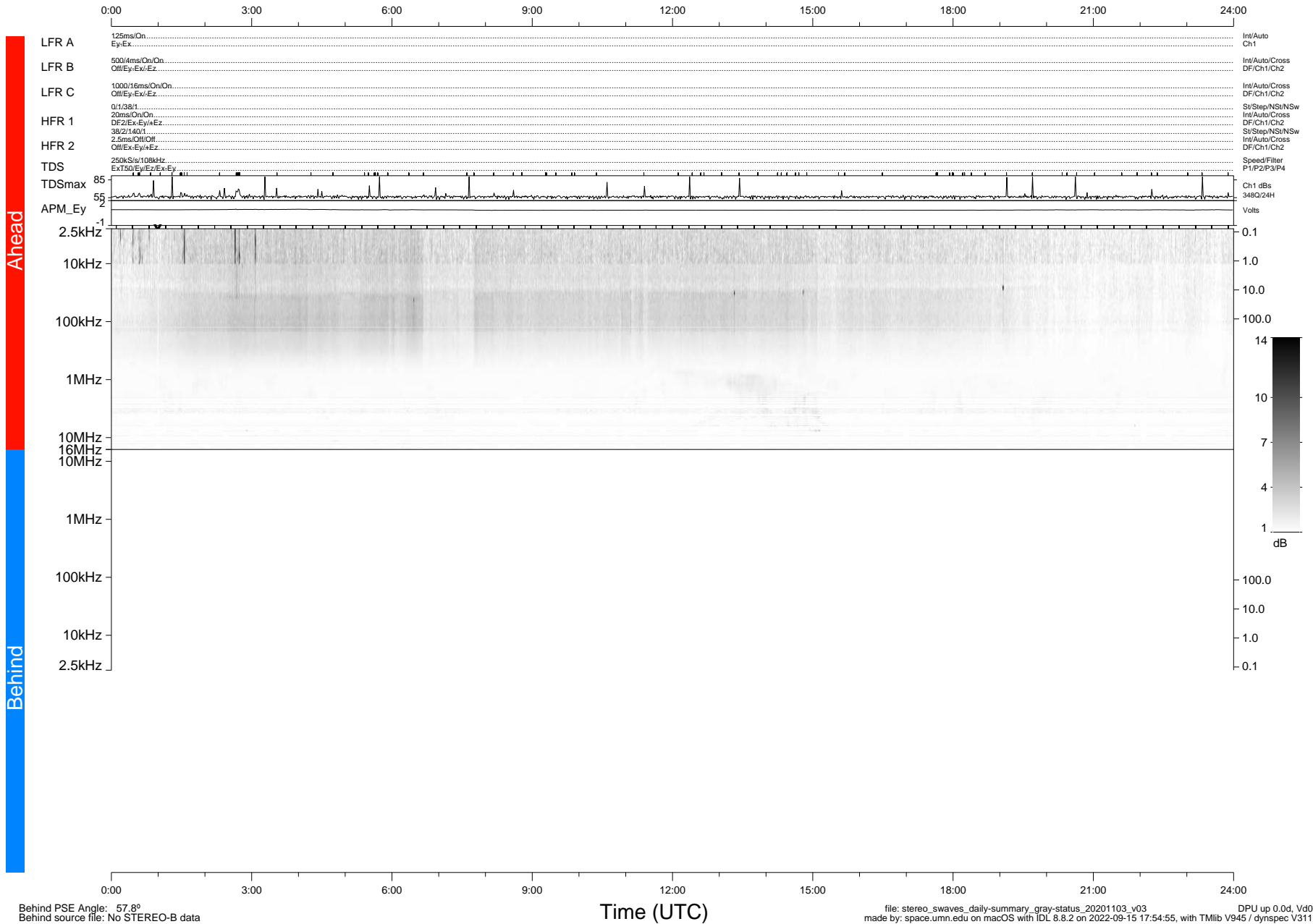


STEREO/WAVES Daily Summary - 03-Nov-2020 (DOY 308)

Ahead source file: swaves_ahead_2020_308_1_06.fin (Recovery: 100.0% HK, 106% Pkts)
 Ahead PSE Angle: -59.1°

DPU up 1945.9d, V412d32



Behind PSE Angle: 57.8°
 Behind source file: No STEREO-B data

file: stereo_swaves_daily-summary_gray-status_20201103_v03
 made by: space.umn.edu on macOS with IDL 8.8.2 on 2022-09-15 17:54:55, with Tlib V945 / dynspec V311
 DPU up 0.0d, Vd0