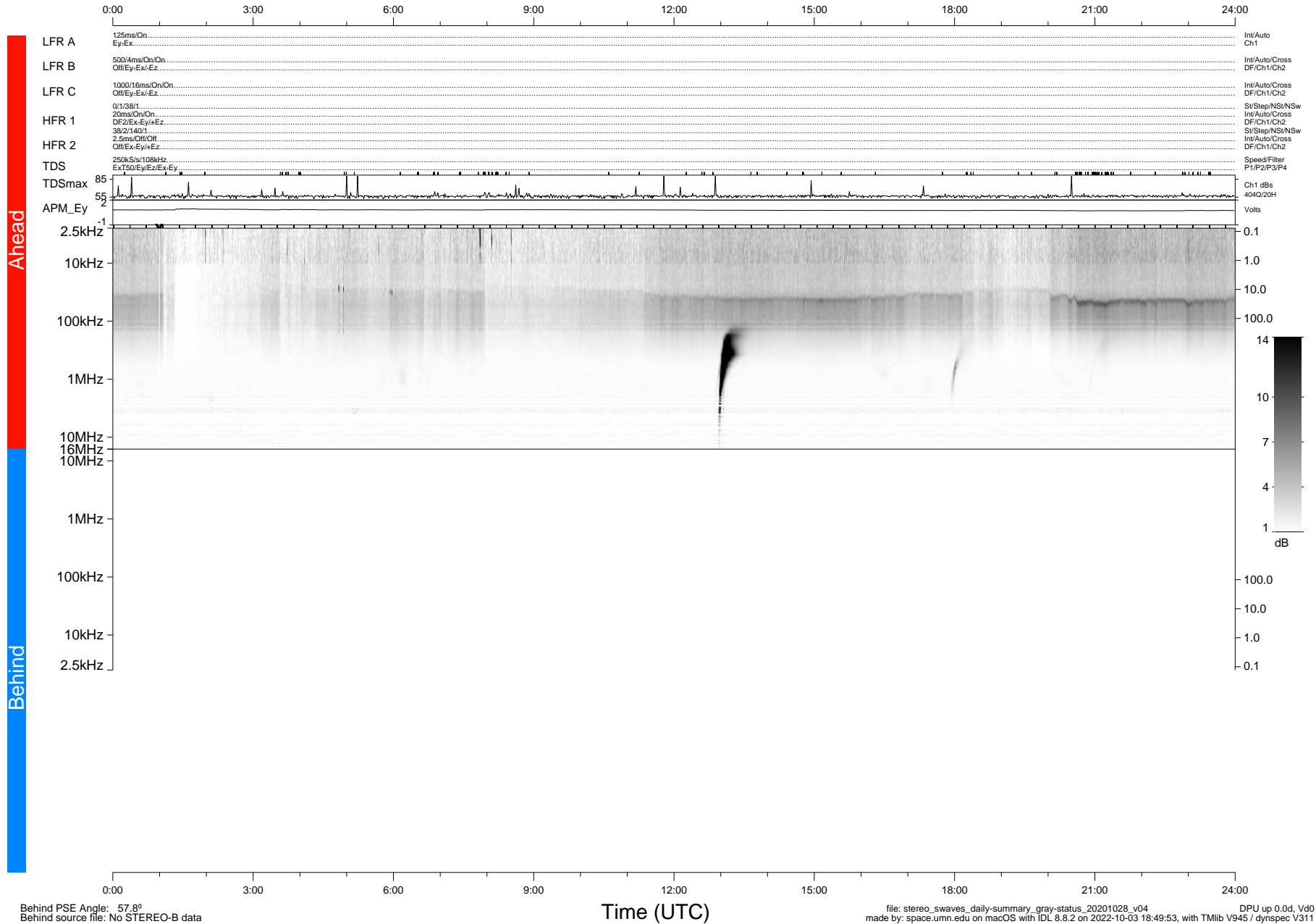


STEREO/WAVES Daily Summary - 28-Oct-2020 (DOY 302)

Ahead source file: swaves_ahead_2020_302_1_05.fin (Recovery: 100.0% HK, 114% Pkts)
 Ahead PSE Angle: -59.4°

DPU up 1939.9d, V412d32



Behind PSE Angle: 57.8°
 Behind source file: No STEREO-B data

Time (UTC)

file: stereo_swaves_daily-summary_gray-status_20201028_v04
 made by: space.umn.edu on macOS with IDL 8.8.2 on 2022-10-03 18:49:53, with TLib V945 / dynspec V311
 DPU up 0.0d, Vd0