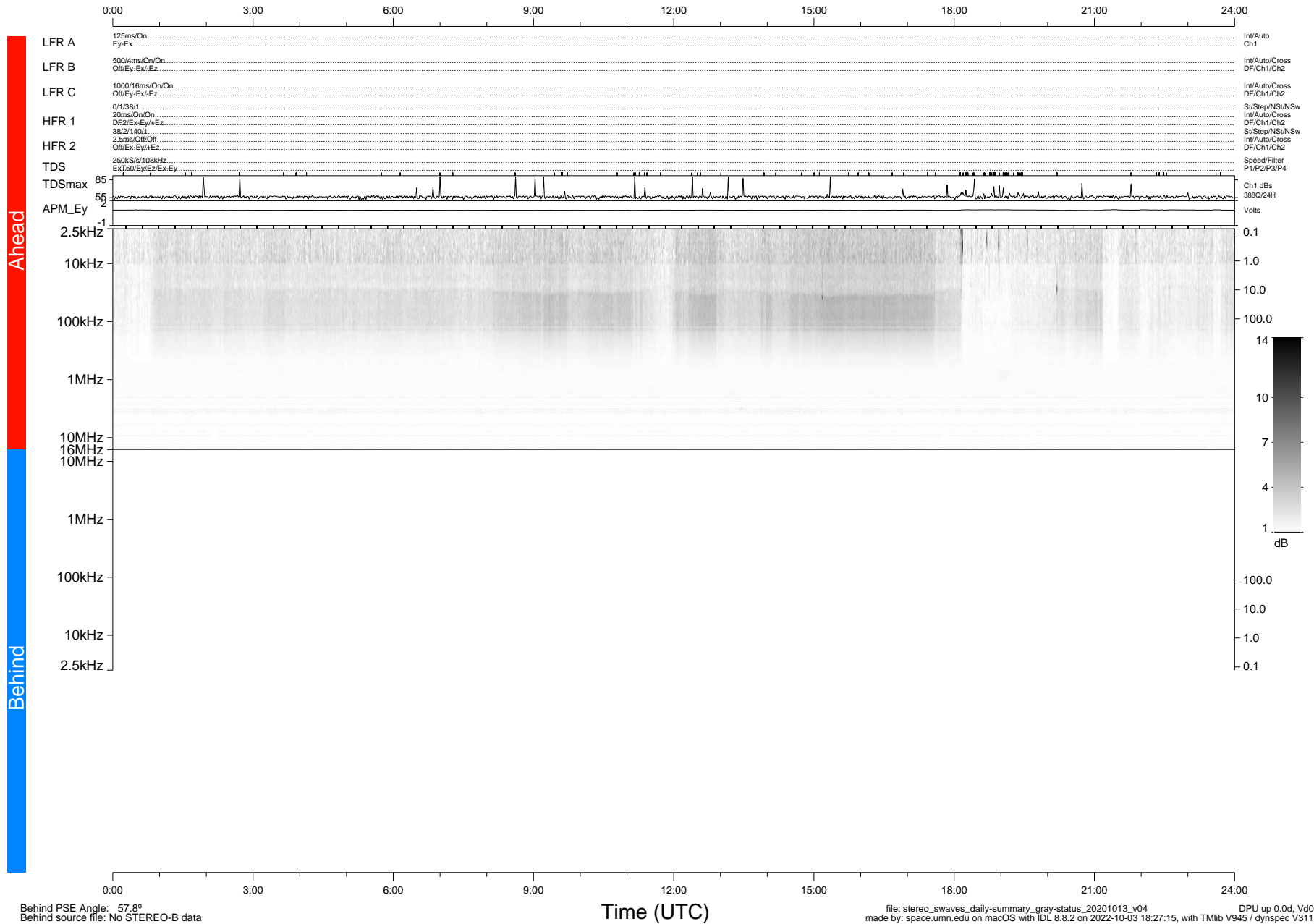


STEREO/WAVES Daily Summary - 13-Oct-2020 (DOY 287)

Ahead source file: swaves_ahead_2020_287_1_05.fin (Recovery: 100.0% HK, 112% Pkts)
 Ahead PSE Angle: -60.4°

DPU up 1924.9d, V412d32



Behind PSE Angle: 57.8°
 Behind source file: No STEREO-B data

Time (UTC)

file: stereo_swaves_daily-summary_gray-status_20201013_v04
 made by: space.umn.edu on macOS with IDL 8.8.2 on 2022-10-03 18:27:15, with Tlib V945 / dynspec V311

DPU up 0.0d, Vd0