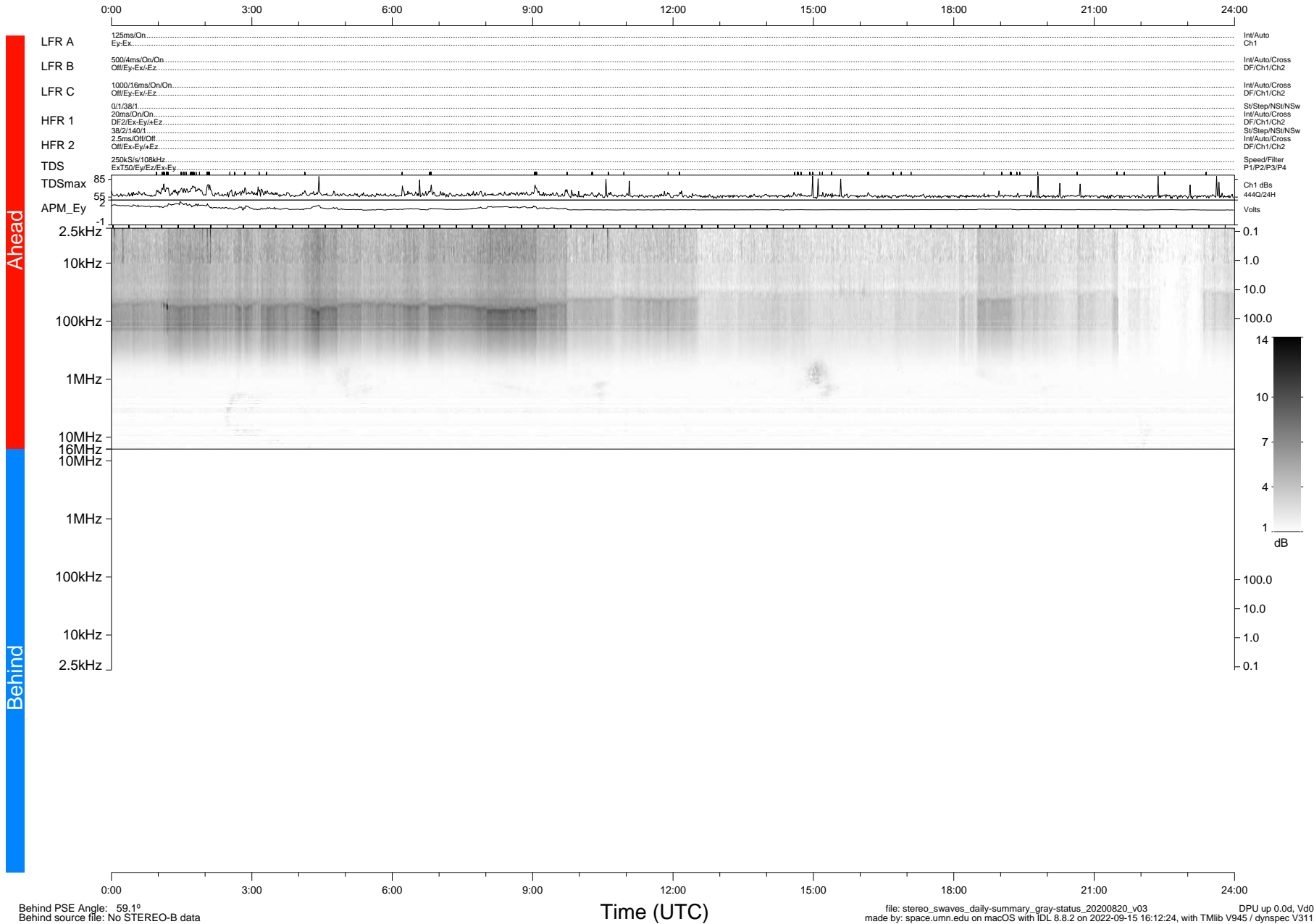


STEREO/WAVES Daily Summary - 20-Aug-2020 (DOY 233)

Ahead source file: swaves_ahead_2020_233_1_05.fin (Recovery: 100.0% HK, 120% Pkts)
 Ahead PSE Angle: -64.8°

DPU up 1870.9d, V412d32



Behind PSE Angle: 59.1°
 Behind source file: No STEREO-B data

Time (UTC)

file: stereo_swaves_daily-summary_gray-status_20200820_v03 DPU up 0.0d, Vd0
 made by: space.umn.edu on macOS with IDL 8.8.2 on 2022-09-15 16:12:24, with Tlib V945 / dynspec V311