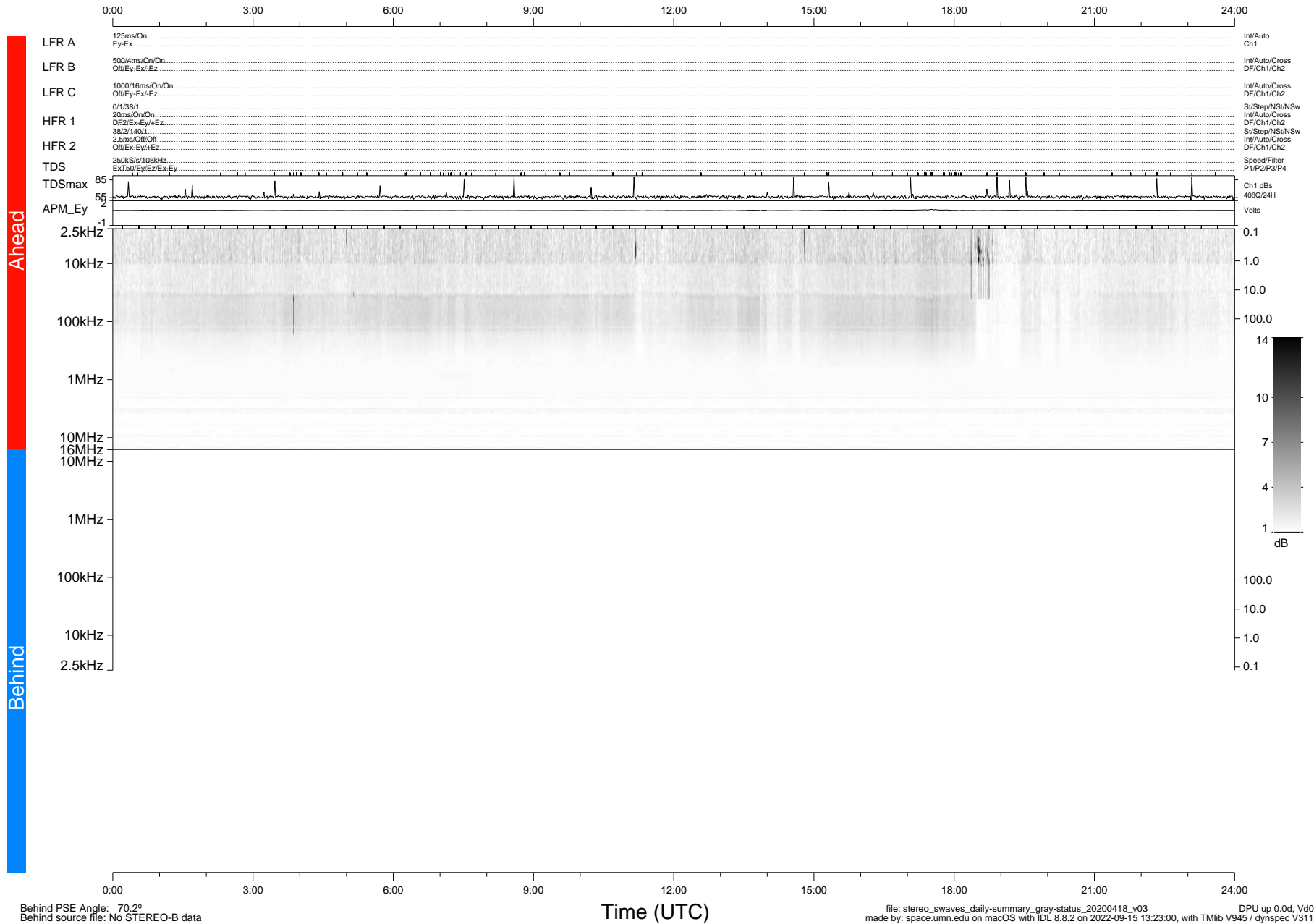


STEREO/WAVES Daily Summary - 18-Apr-2020 (DOY 109)

Ahead source file: swaves_ahead_2020_109_1_05.fin (Recovery: 100.0% HK, 115% Pkts)
 Ahead PSE Angle: -74.9°

DPU up 1746.9d, V412d32



Behind PSE Angle: 70.2°
 Behind source file: No STEREO-B data

Time (UTC)

file: stereo_swaves_daily-summary_gray-status_20200418_v03
 made by: space.umn.edu on macOS with IDL 8.8.2 on 2022-09-15 13:23:00, with TLib V945 / dynspec V311
 DPU up 0.0d, Vd0