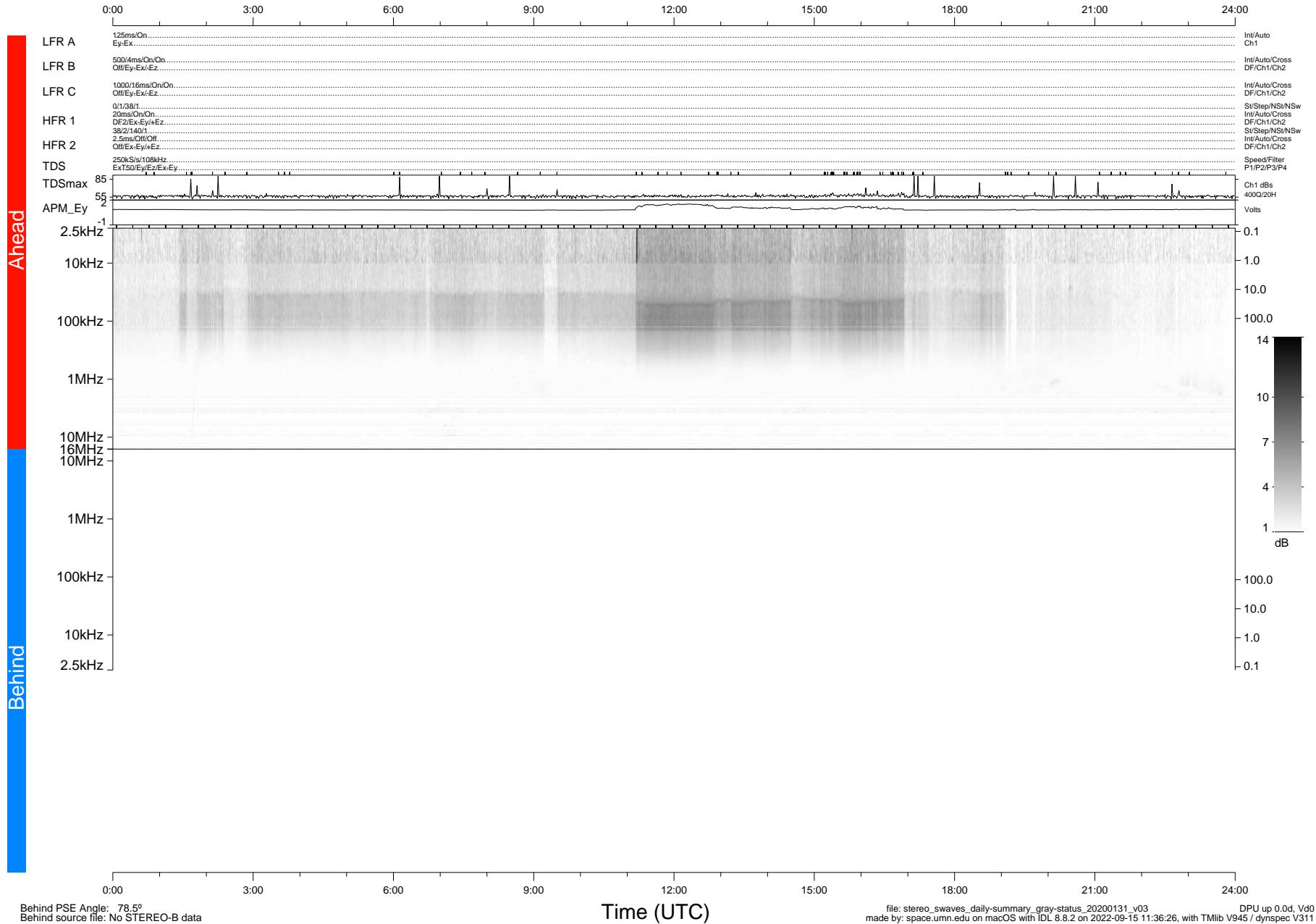


STEREO/WAVES Daily Summary - 31-Jan-2020 (DOY 031)

Ahead source file: swaves_ahead_2020_031_1_05.fin (Recovery: 100.0% HK, 113% Pkts)
 Ahead PSE Angle: -77.9°

DPU up 1668.9d, V412d32



Behind PSE Angle: 78.5°
 Behind source file: No STEREO-B data

Time (UTC)

file: stereo_swaves_daily-summary_gray-status_20200131_v03
 made by: space.umn.edu on macOS with IDL 8.8.2 on 2022-09-15 11:36:26, with TLib V945 / dynspec V311
 DPU up 0.0d, Vd0