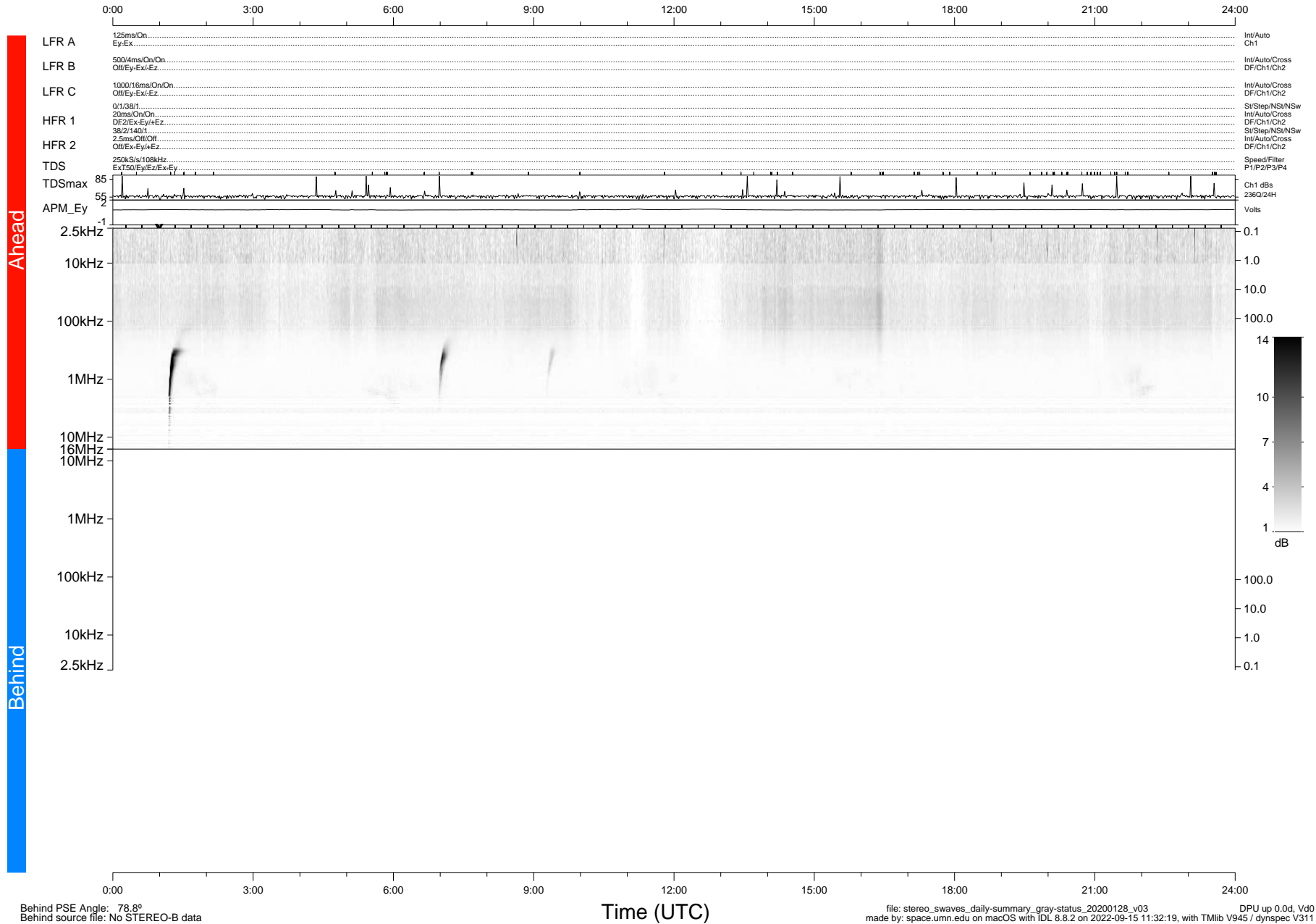


# STEREO/WAVES Daily Summary - 28-Jan-2020 (DOY 028)

Ahead source file: swaves\_ahead\_2020\_028\_1\_05.fin (Recovery: 100.0% HK, 89% Pkts)  
 Ahead PSE Angle: -77.9°

DPU up 1665.9d, V412d32



Behind PSE Angle: 78.8°  
 Behind source file: No STEREO-B data

Time (UTC)

file: stereo\_swaves\_daily-summary\_gray-status\_20200128\_v03  
 made by: space.umn.edu on macOS with IDL 8.8.2 on 2022-09-15 11:32:19, with Tlib V945 / dynspec V311  
 DPU up 0.0d, Vd0