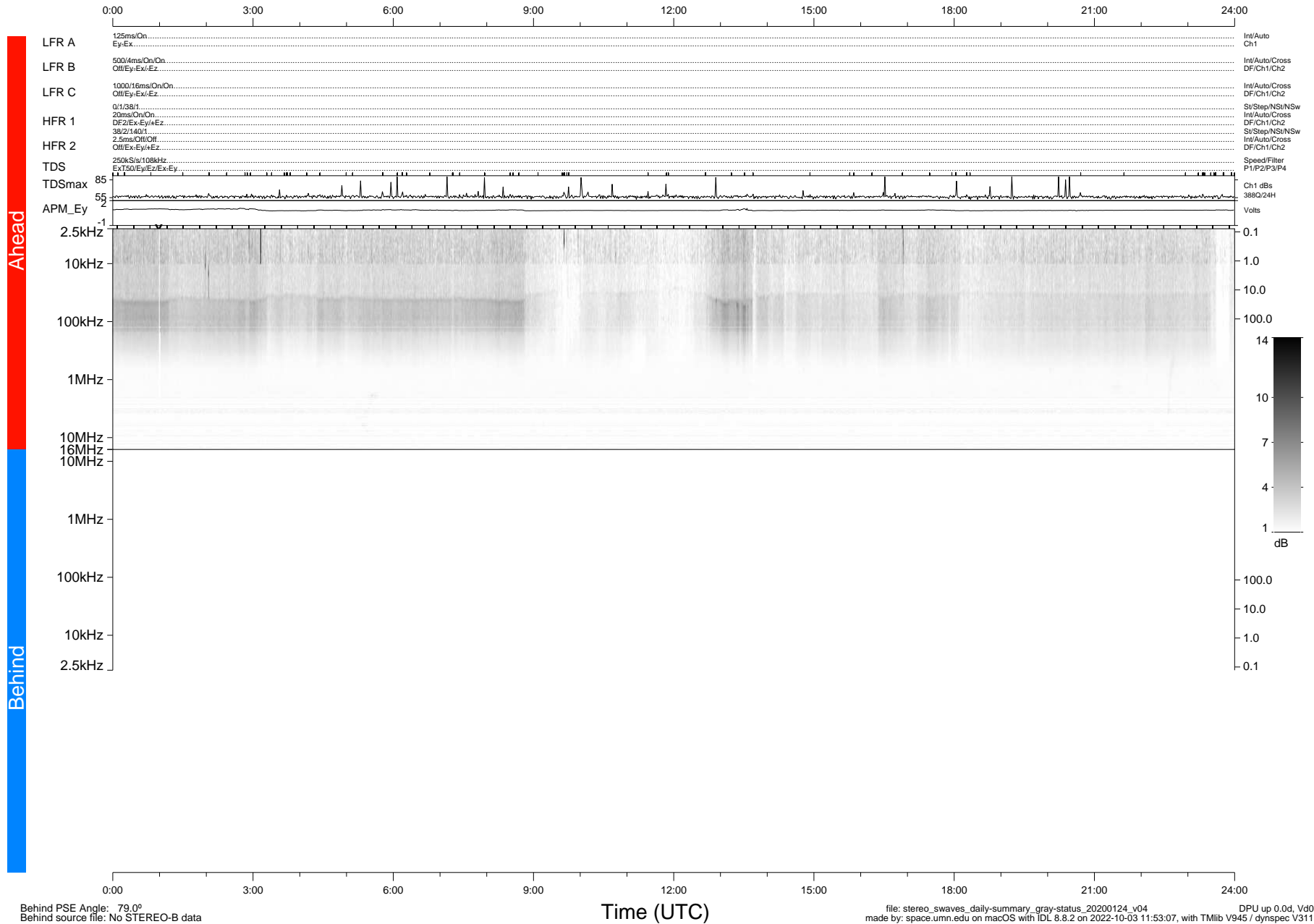


STEREO/WAVES Daily Summary - 24-Jan-2020 (DOY 024)

Ahead source file: swaves_ahead_2020_024_1_05.fin (Recovery: 100.0% HK, 112% Pkts)
 Ahead PSE Angle: -78.1°

DPU up 1661.9d, V412d32



Behind PSE Angle: 79.0°
 Behind source file: No STEREO-B data

Time (UTC)

file: stereo_swaves_daily-summary_gray-status_20200124_v04
 made by: space.umn.edu on macOS with IDL 8.8.2 on 2022-10-03 11:53:07, with TLib V945 / dynspec V311
 DPU up 0.0d, Vd0