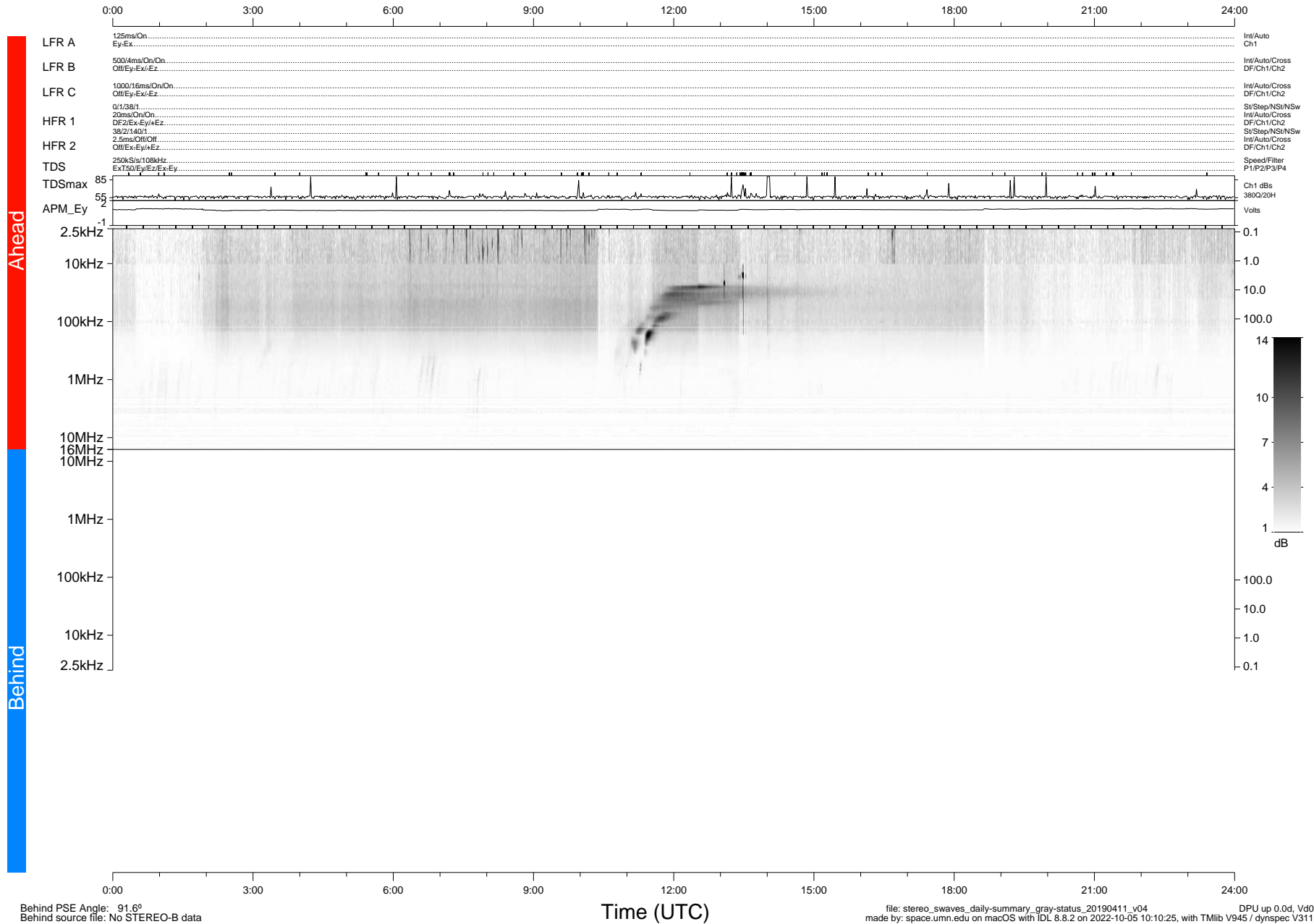


STEREO/WAVES Daily Summary - 11-Apr-2019 (DOY 101)

Ahead source file: swaves_ahead_2019_101_1_05.fin (Recovery: 100.0% HK, 110% Pkts)
 Ahead PSE Angle: -96.7°

DPU up 1373.9d, V412d32



Behind PSE Angle: 91.6°
 Behind source file: No STEREO-B data

file: stereo_swaves_daily-summary_gray-status_20190411_v04
 made by: space.umn.edu on macOS with IDL 8.8.2 on 2022-10-05 10:10:25, with TLib V945 / dynspec V311
 DPU up 0.0d, Vd0

Time (UTC)