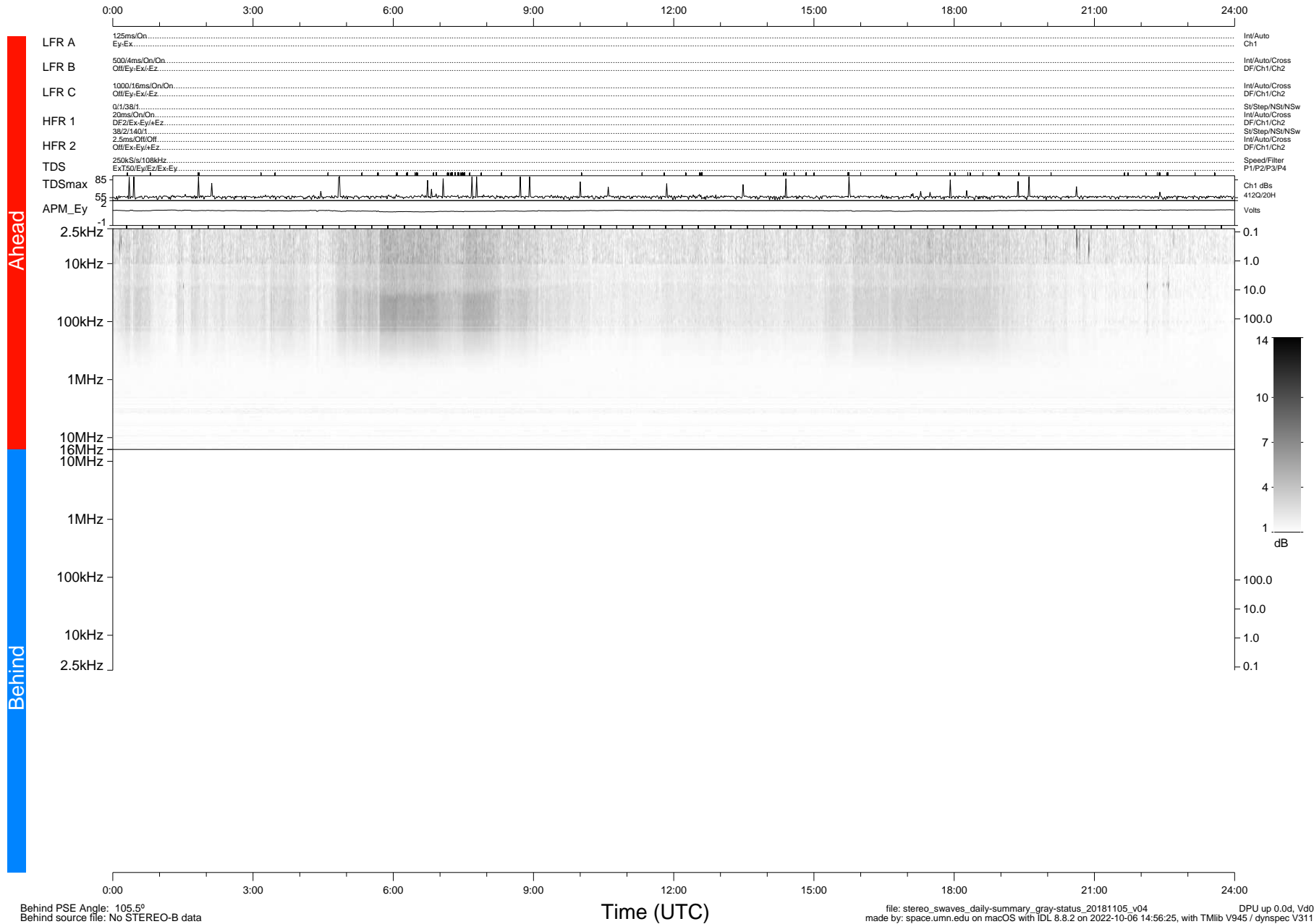


# STEREO/WAVES Daily Summary - 05-Nov-2018 (DOY 309)

Ahead source file: swaves\_ahead\_2018\_309\_1\_05.fin (Recovery: 100.0% HK, 115% Pkts)  
 Ahead PSE Angle: -102.8°

DPU up 1216.9d, V412d32



Behind PSE Angle: 105.5°  
 Behind source file: No STEREO-B data

Time (UTC)

file: stereo\_swaves\_daily-summary\_gray-status\_20181105\_v04 DPU up 0.0d, Vd0  
 made by: space.umn.edu on macOS with IDL 8.8.2 on 2022-10-06 14:56:25, with Tlib V945 / dynspec V311