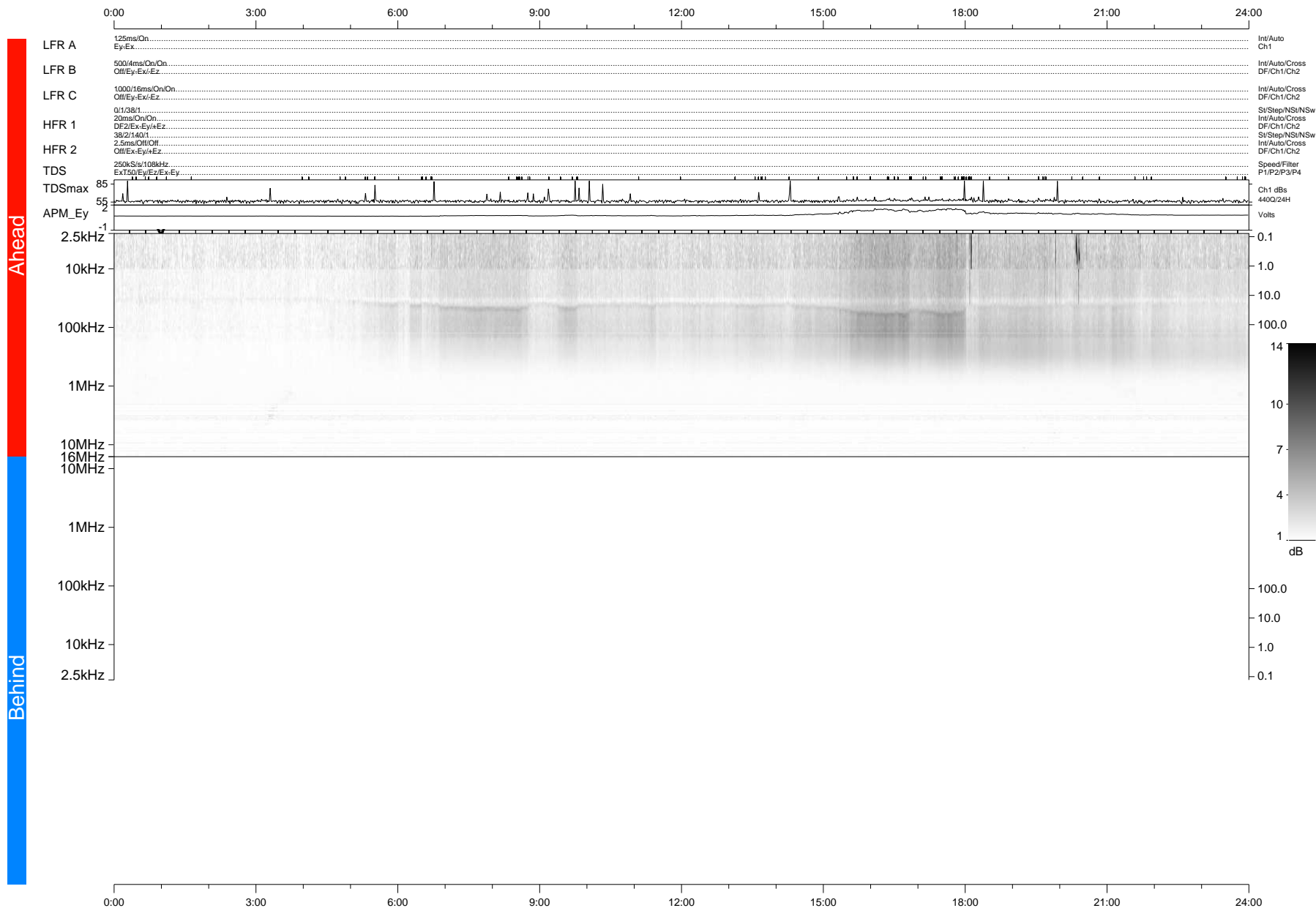


STEREO/WAVES Daily Summary - 21-Oct-2018 (DOY 294)

Ahead source file: swaves_ahead_2018_294_1_05.fin (Recovery: 100.0% HK, 119% Pkts)
 Ahead PSE Angle: -103.7°

DPU up 1201.9d, V412d32



Behind PSE Angle: 105.5°
 Behind source file: No STEREO-B data

Time (UTC)

file: stereo_swaves_daily-summary_gray-status_20181021_v04 DPU up 0.0d, Vd0
 made by: space.umn.edu on macOS with IDL 8.8.2 on 2022-10-06 14:33:56, with TLib V945 / dynspec V311