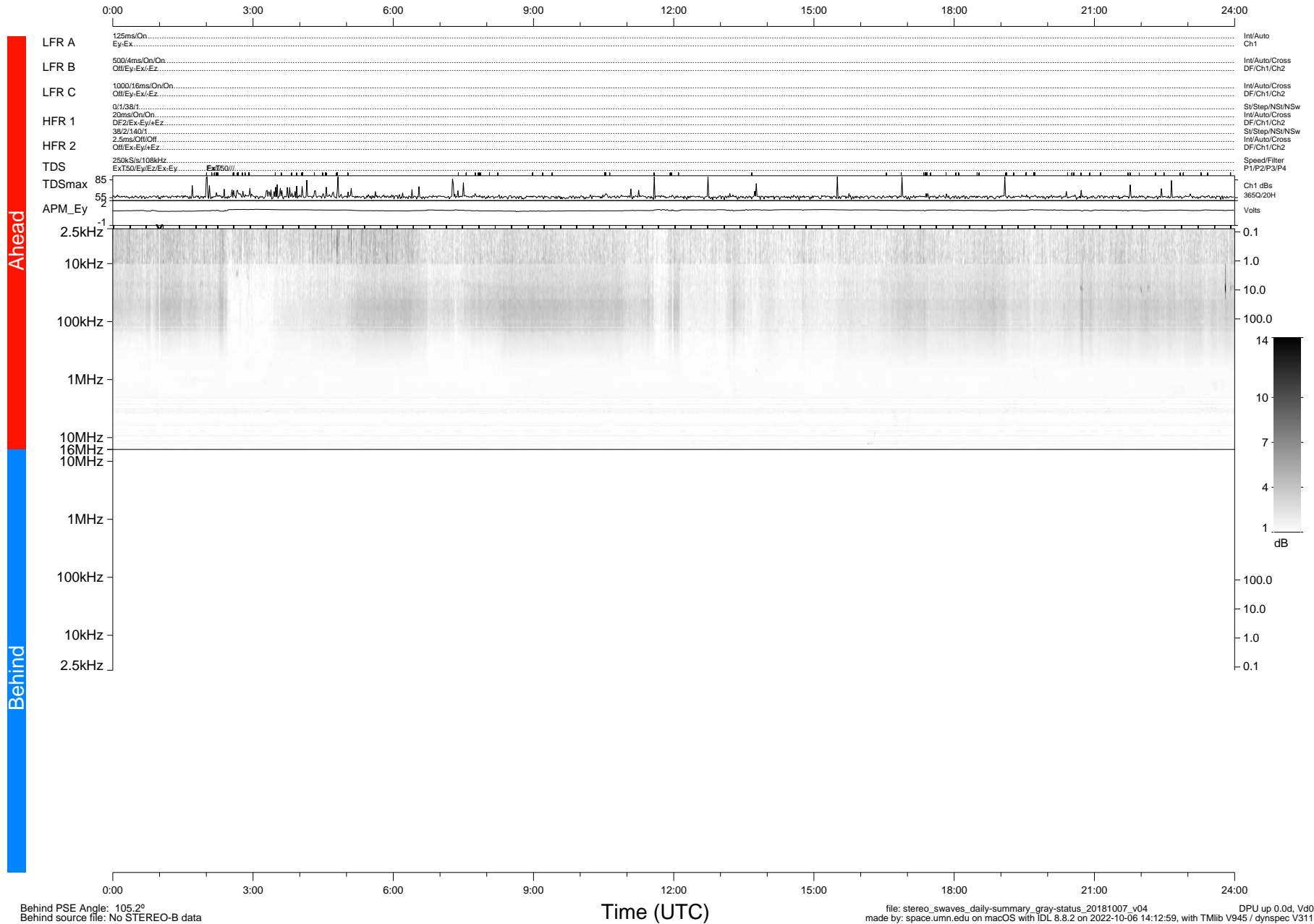


STEREO/WAVES Daily Summary - 07-Oct-2018 (DOY 280)

Ahead source file: swaves_ahead_2018_280_1_05.fin (Recovery: 100.0% HK, 107% Pkts)
 Ahead PSE Angle: -104.7°

DPU up 1187.9d, V412d32



Behind PSE Angle: 105.2°
 Behind source file: No STEREO-B data

Time (UTC)

file: stereo_swaves_daily-summary_gray-status_20181007_v04 DPU up 0.0d, Vd0
 made by: space.umn.edu on macOS with IDL 8.8.2 on 2022-10-06 14:12:59, with Tlib V945 / dynspec V311