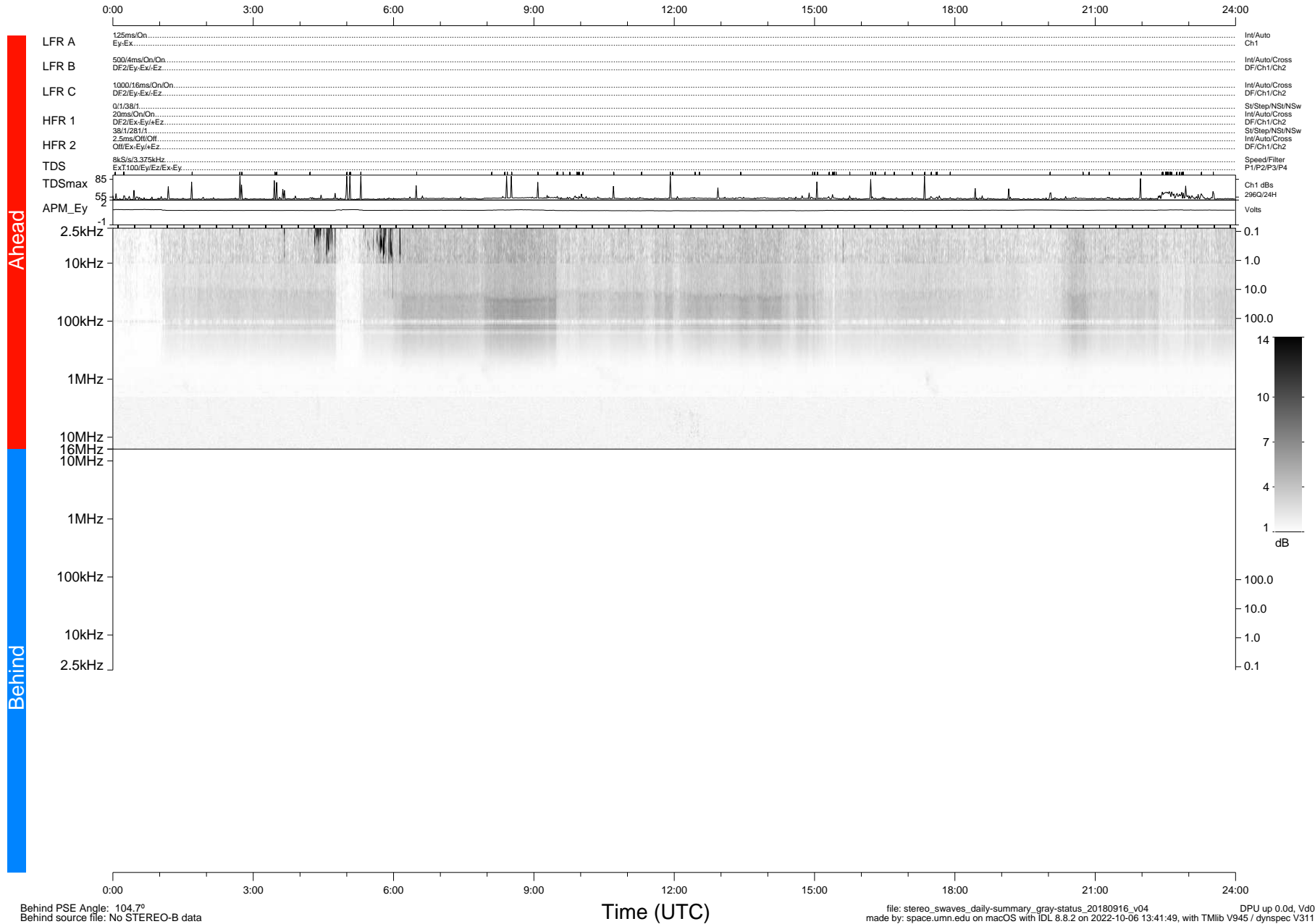


STEREO/WAVES Daily Summary - 16-Sep-2018 (DOY 259)

Ahead source file: swaves_ahead_2018_259_1_05.fin (Recovery: 100.0% HK, 99% Pkts)
 Ahead PSE Angle: -106.2°

DPU up 1166.9d, V412d28



Behind PSE Angle: 104.7°
 Behind source file: No STEREO-B data

Time (UTC)

file: stereo_swaves_daily-summary_gray-status_20180916_v04 DPU up 0.0d, Vd0
 made by: space.umn.edu on macOS with IDL 8.8.2 on 2022-10-06 13:41:49, with Tlib V945 / dynspec V311