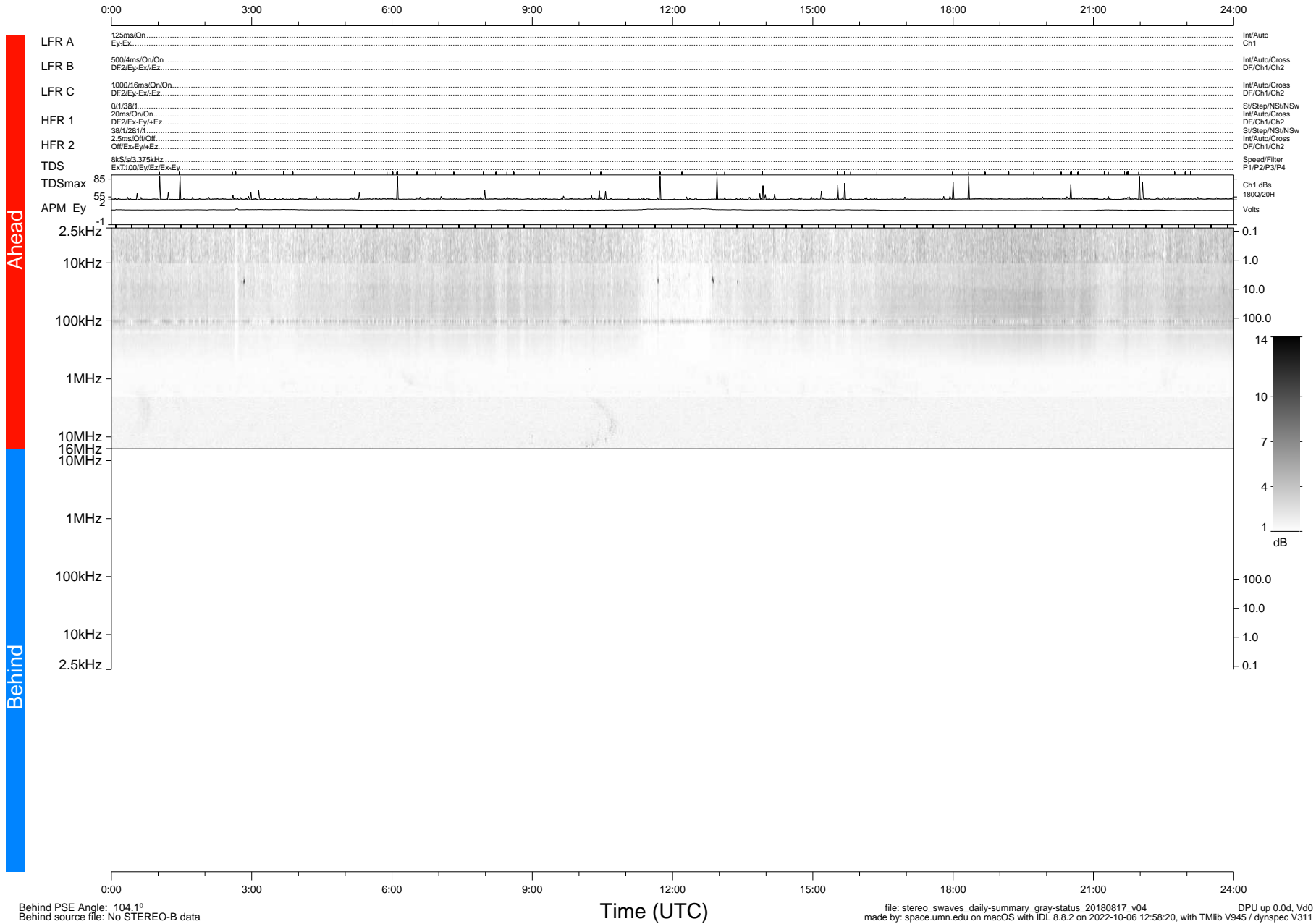


# STEREO/WAVES Daily Summary - 17-Aug-2018 (DOY 229)

Ahead source file: swaves\_ahead\_2018\_229\_1\_05.fin (Recovery: 100.0% HK, 82% Pkts)  
 Ahead PSE Angle: -108.6°

DPU up 1136.9d, V412d28



Behind PSE Angle: 104.1°  
 Behind source file: No STEREO-B data

Time (UTC)

file: stereo\_swaves\_daily-summary\_gray-status\_20180817\_v04 DPU up 0.0d, Vd0  
 made by: space.umn.edu on macOS with IDL 8.8.2 on 2022-10-06 12:58:20, with Tlib V945 / dynspec V311