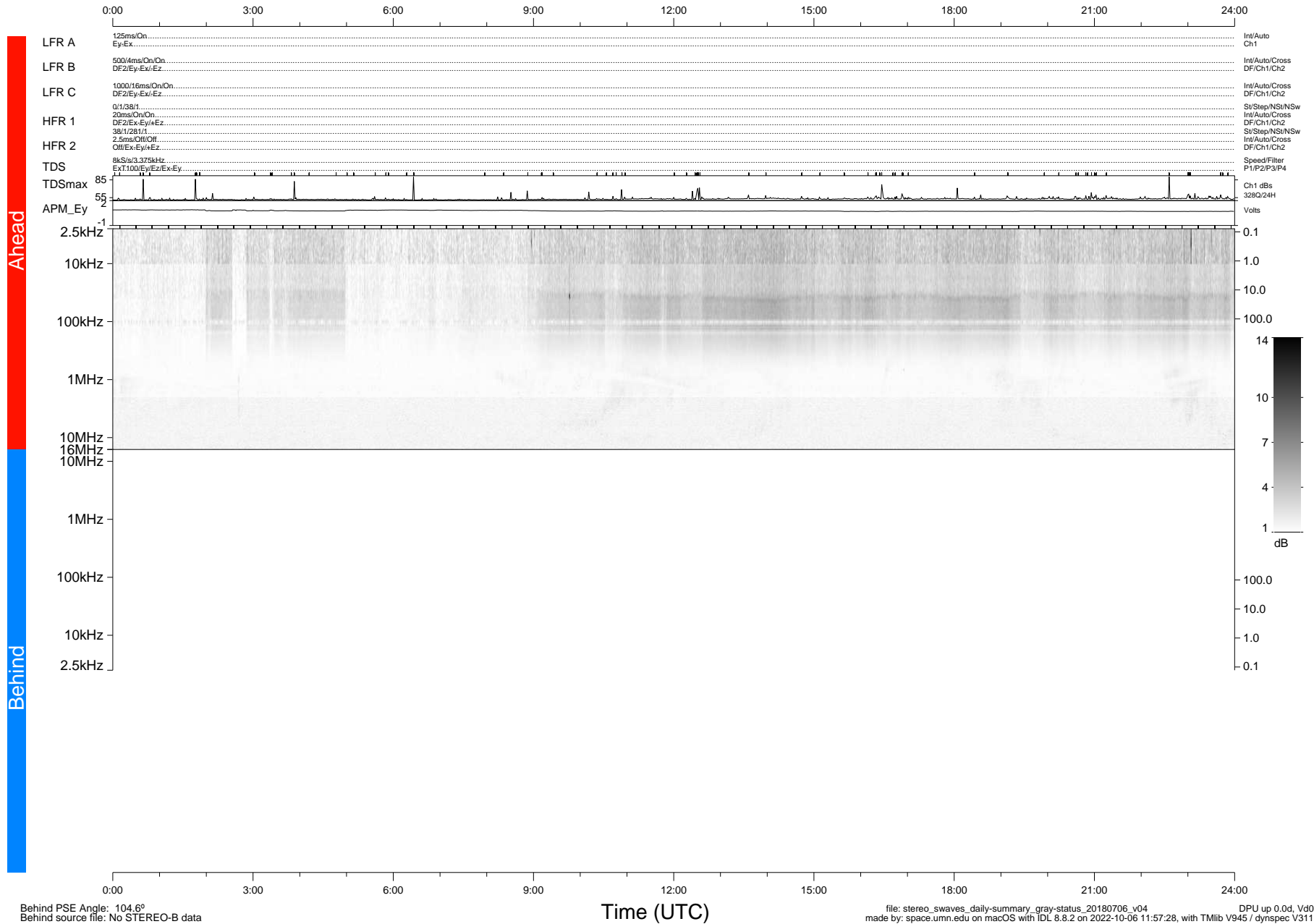


STEREO/WAVES Daily Summary - 06-Jul-2018 (DOY 187)

Ahead source file: swaves_ahead_2018_187_1_05.fin (Recovery: 100.0% HK, 104% Pkts)
 Ahead PSE Angle: -112.1°

DPU up 1094.9d, V412d28



Behind PSE Angle: 104.6°
 Behind source file: No STEREO-B data

Time (UTC)

file: stereo_swaves_daily-summary_gray-status_20180706_v04
 made by: space.umn.edu on macOS with IDL 8.8.2 on 2022-10-06 11:57:28, with Tlib V945 / dynspec V311
 DPU up 0.0d, Vd0