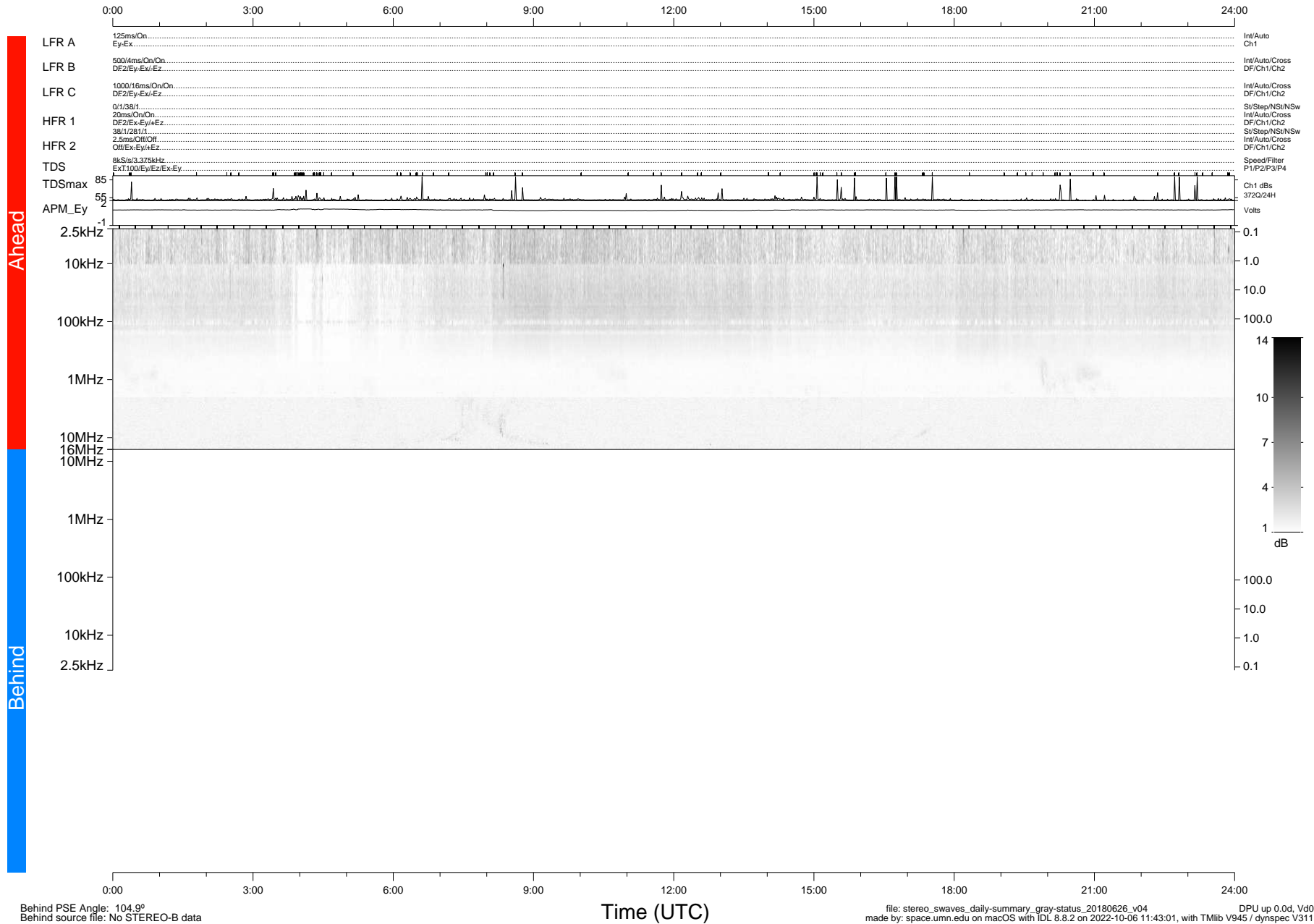


# STEREO/WAVES Daily Summary - 26-Jun-2018 (DOY 177)

Ahead source file: swaves\_ahead\_2018\_177\_1\_05.fin (Recovery: 100.0% HK, 111% Pkts)  
 Ahead PSE Angle: -112.9°

DPU up 1084.9d, V412d28



Behind PSE Angle: 104.9°  
 Behind source file: No STEREO-B data

Time (UTC)

file: stereo\_swaves\_daily-summary\_gray-status\_20180626\_v04 DPU up 0.0d, Vd0  
 made by: space.umn.edu on macOS with IDL 8.8.2 on 2022-10-06 11:43:01, with Tlib V945 / dynspec V311