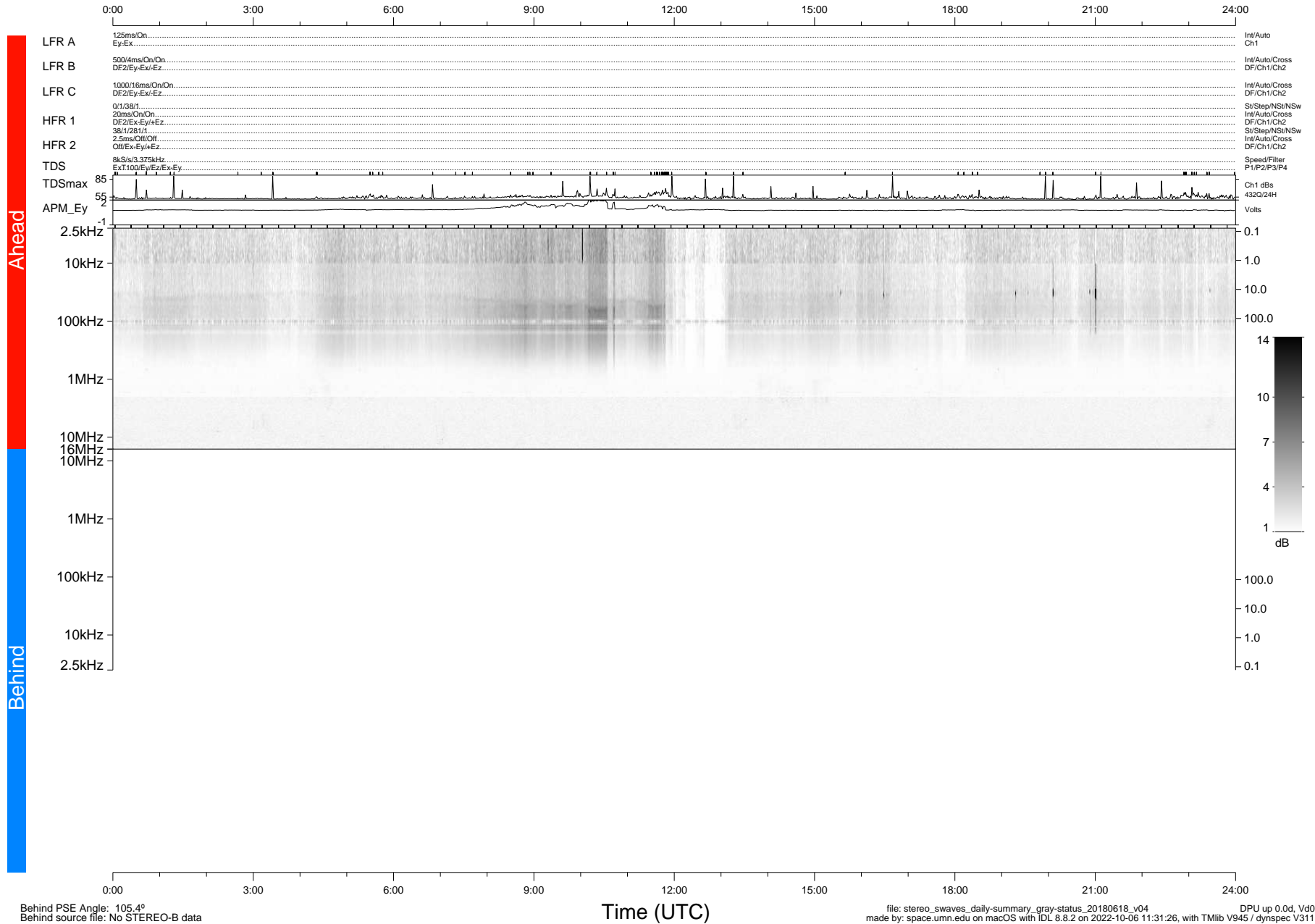


# STEREO/WAVES Daily Summary - 18-Jun-2018 (DOY 169)

Ahead source file: swaves\_ahead\_2018\_169\_1\_05.fin (Recovery: 100.0% HK, 119% Pkts)  
 Ahead PSE Angle: -113.5°

DPU up 1076.9d, V412d28



Behind PSE Angle: 105.4°  
 Behind source file: No STEREO-B data

file: stereo\_swaves\_daily-summary\_gray-status\_20180618\_v04  
 made by: space.umn.edu on macOS with IDL 8.8.2 on 2022-10-06 11:31:26, with Tlib V945 / dynspec V311  
 DPU up 0.0d, Vd0