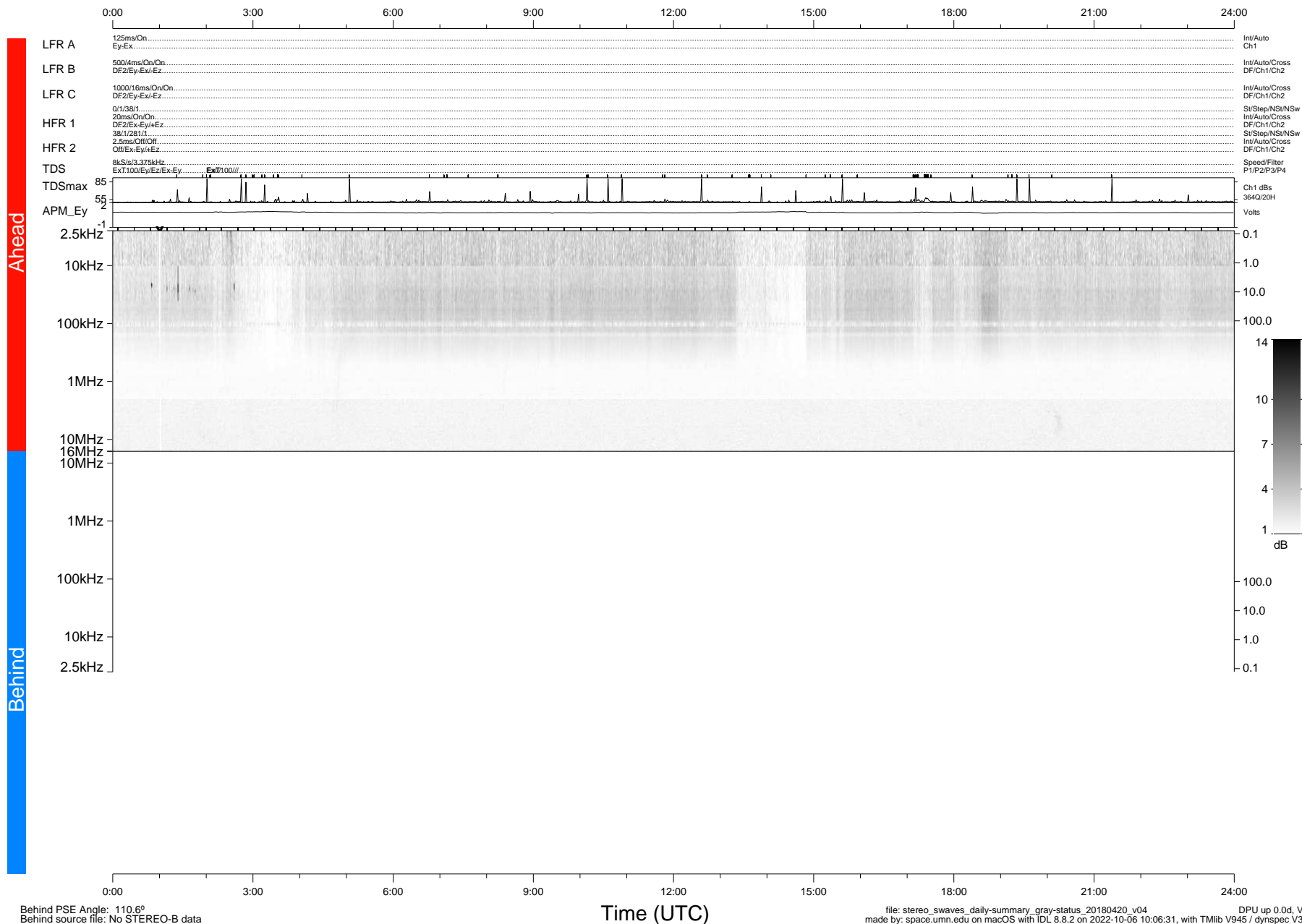


STEREO/WAVES Daily Summary - 20-Apr-2018 (DOY 110)

Ahead source file: swaves_ahead_2018_110_1_06.fin (Recovery: 100.0% HK, 108% Pkts)
 Ahead PSE Angle: -117.7°

DPU up 1017.9d, V412d28



Behind PSE Angle: 110.6°
 Behind source file: No STEREO-B data

Time (UTC)

file: stereo_swaves_daily-summary_gray-status_20180420_v04
 made by: space.umn.edu on macOS with IDL 8.8.2 on 2022-10-06 10:06:31, with Tlib V945 / dynspec V311

DPU up 0.0d, Vd0