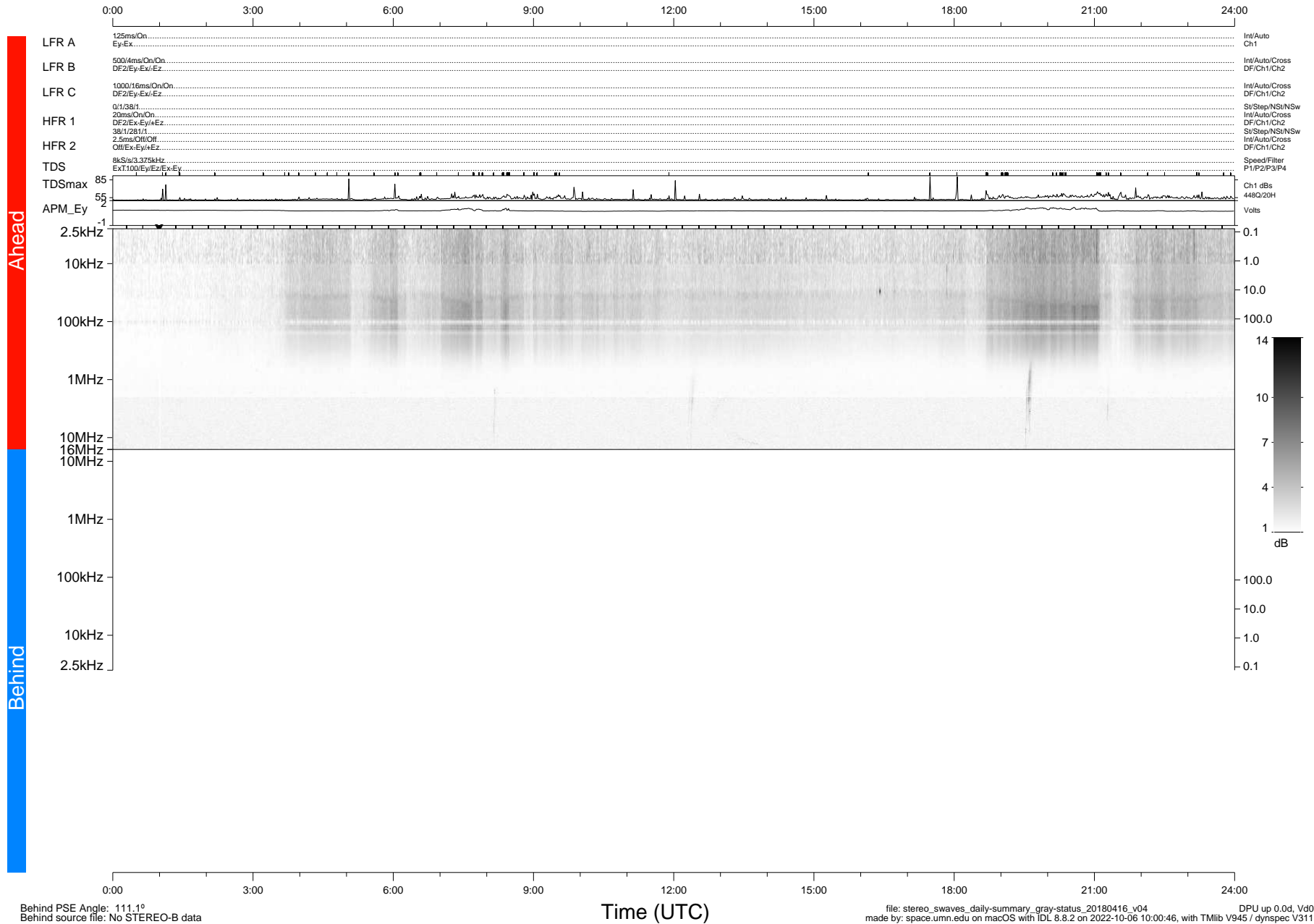


STEREO/WAVES Daily Summary - 16-Apr-2018 (DOY 106)

Ahead source file: swaves_ahead_2018_106_1_05.fin (Recovery: 100.0% HK, 121% Pkts)
 Ahead PSE Angle: -117.9°

DPU up 1013.9d, V412d28



Behind PSE Angle: 111.1°
 Behind source file: No STEREO-B data

file: stereo_swaves_daily-summary_gray-status_20180416_v04
 made by: space.umn.edu on macOS with IDL 8.8.2 on 2022-10-06 10:00:46, with TLib V945 / dynspec V311
 DPU up 0.0d, Vd0