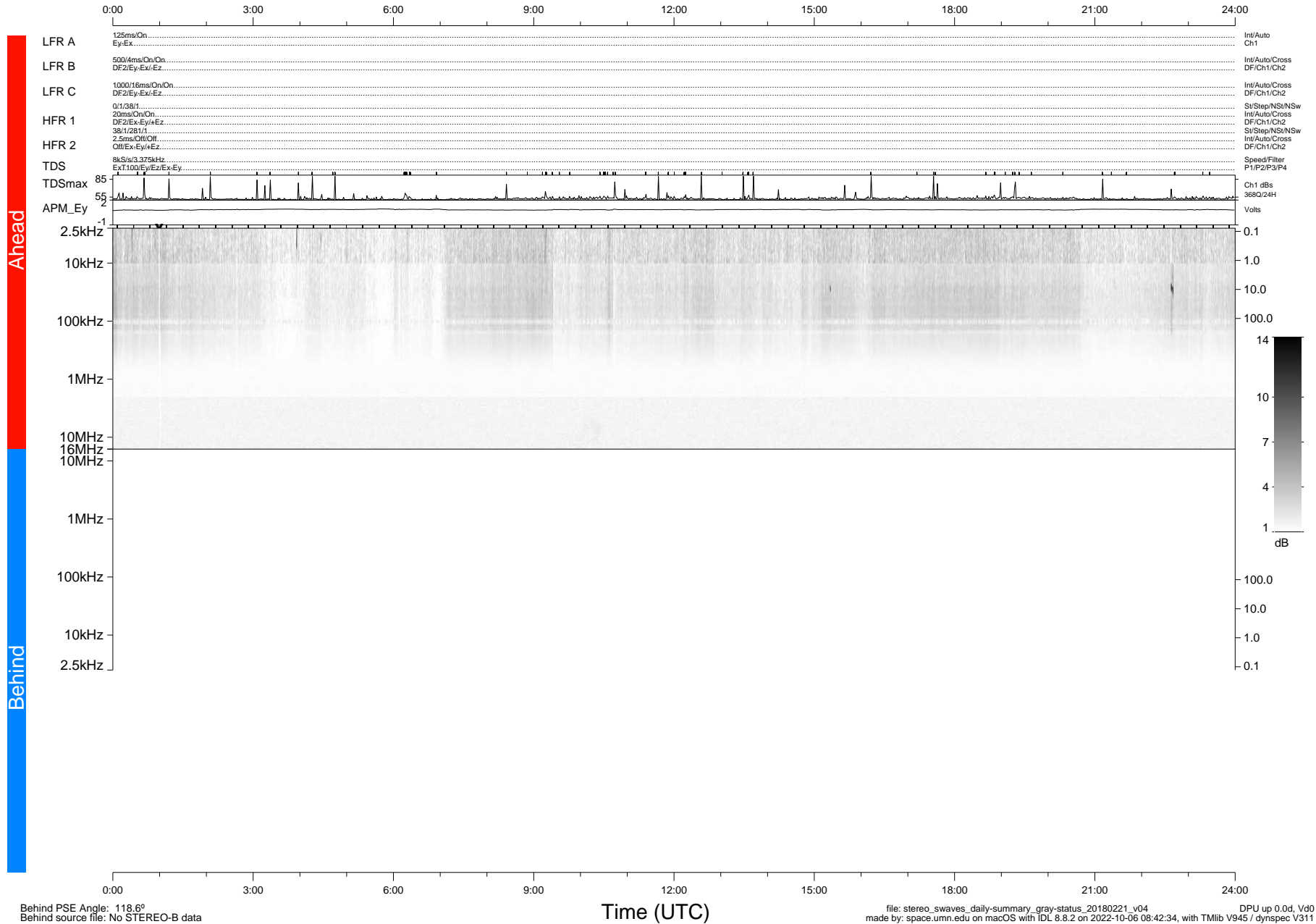


STEREO/WAVES Daily Summary - 21-Feb-2018 (DOY 052)

Ahead source file: swaves_ahead_2018_052_1_05.fin (Recovery: 100.0% HK, 110% Pkts)
 Ahead PSE Angle: -120.4°

DPU up 959.9d, V412d28



Behind PSE Angle: 118.6°
 Behind source file: No STEREO-B data

Time (UTC)

file: stereo_swaves_daily-summary_gray-status_20180221_v04 DPU up 0.0d, Vd0
 made by: space.umn.edu on macOS with IDL 8.8.2 on 2022-10-06 08:42:34, with TLib V945 / dynspec V311