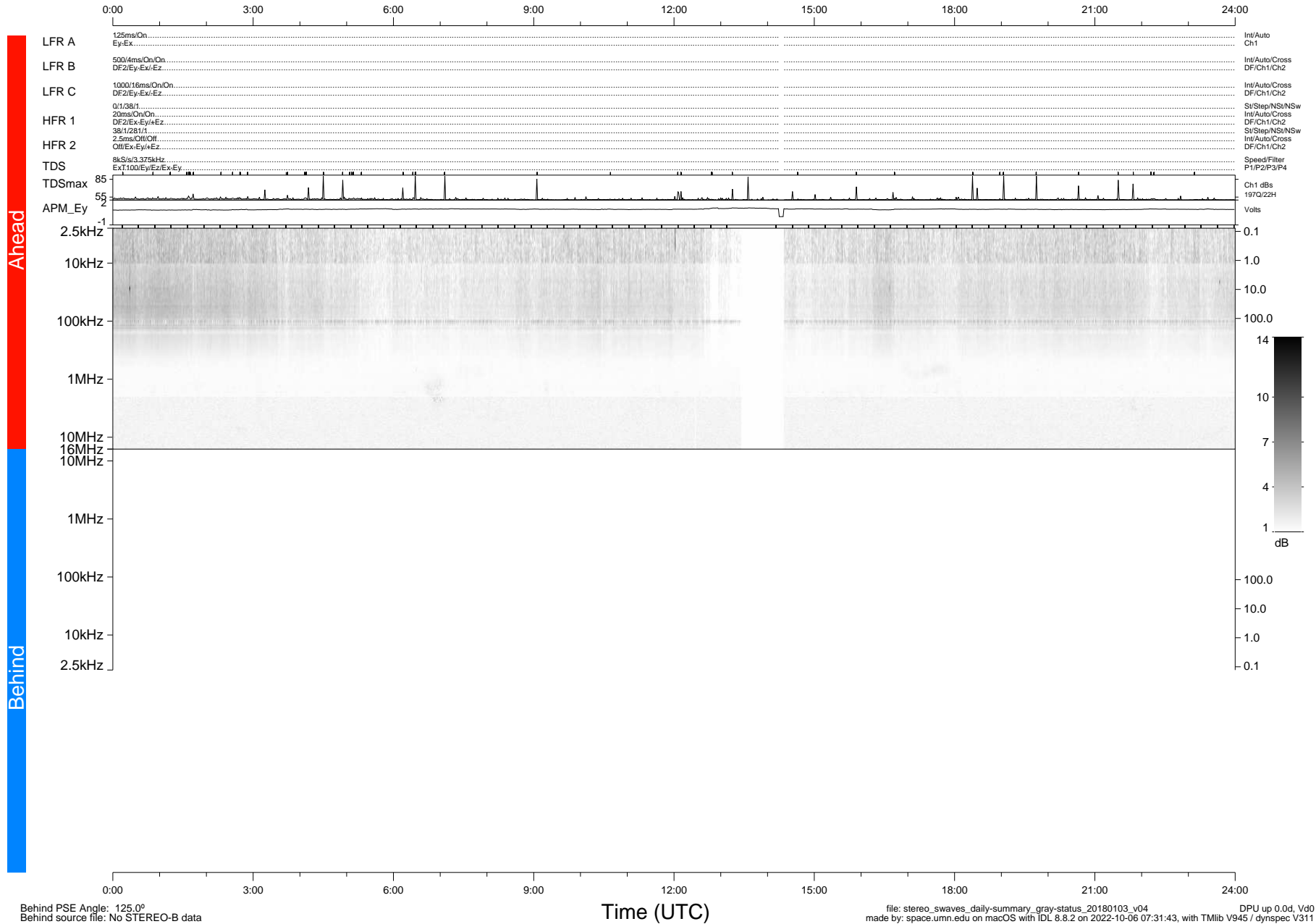


STEREO/WAVES Daily Summary - 03-Jan-2018 (DOY 003)

Ahead source file: swaves_ahead_2018_003_1_05.fin (Recovery: 99.6% HK, 83% Pkts)
 Ahead PSE Angle: -122.2°

DPU up 910.9d, V412d28



Behind PSE Angle: 125.0°
 Behind source file: No STEREO-B data

file: stereo_swaves_daily-summary_gray-status_20180103_v04
 made by: space.umn.edu on macOS with IDL 8.8.2 on 2022-10-06 07:31:43, with TLib V945 / dynspec V311
 DPU up 0.0d, Vd0