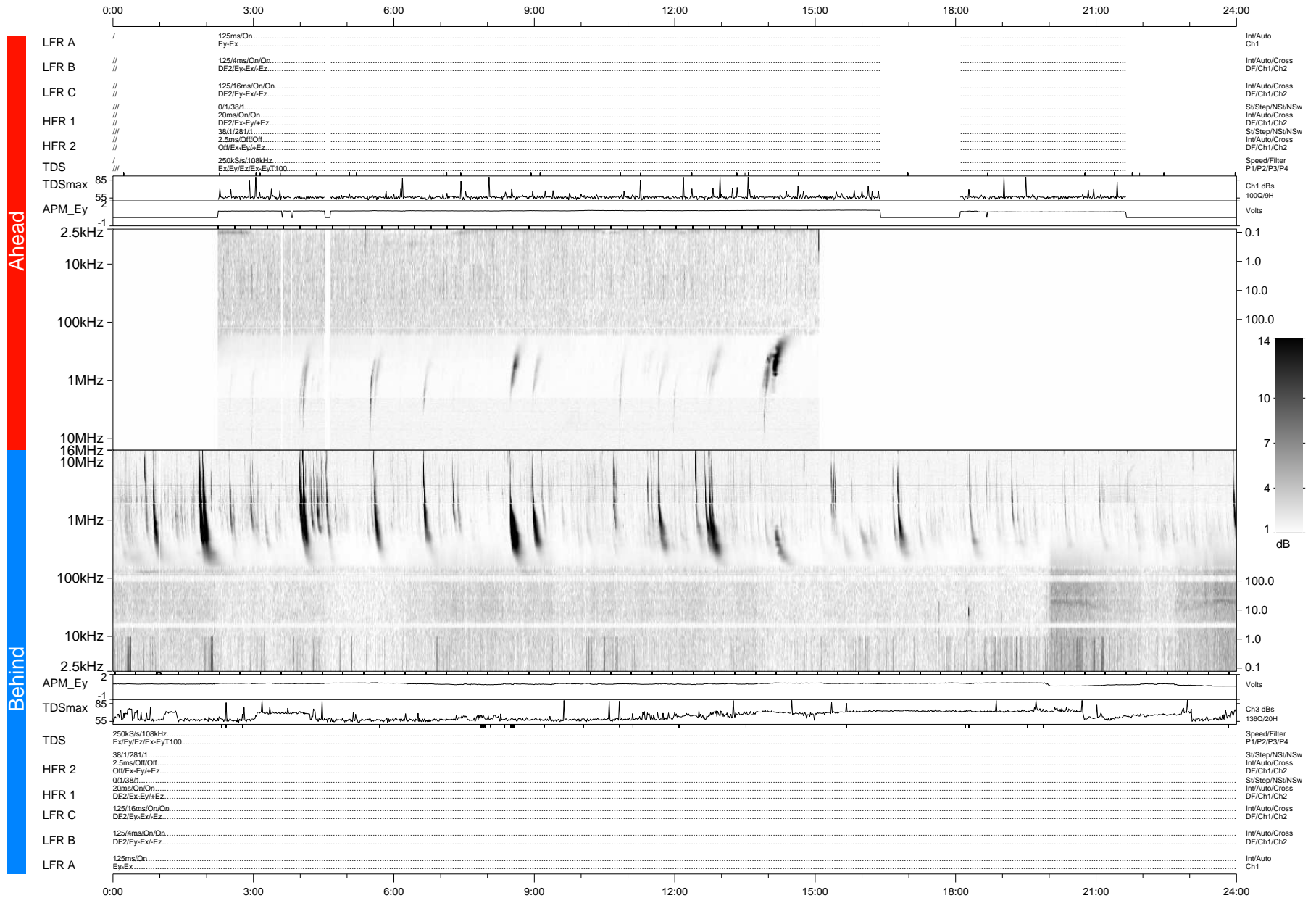


STEREO/WAVES Daily Summary - 17-Dec-2012 (DOY 352)

Ahead source file: swaves_ahead_2012_352_1_08.fin (Recovery: 73.0% HK, 48% Pkts)
 Ahead PSE Angle: 128.4°

DPU up 63.3d, V412d20



Behind PSE Angle: -129.2°
 Behind source file: swaves_behind_2012_352_1_04.fin (Recovery: 100.0% HK, 77% Pkts)

Time (UTC)

file: stereo_swaves_daily-summary_gray-status_20121217_v04 DPU up 149.5d, V410d21
 made by: space.umn.edu on macOS with IDL 8.8.2 on 2022-10-14 17:26:56, with TMLib V945 / dynspec V311