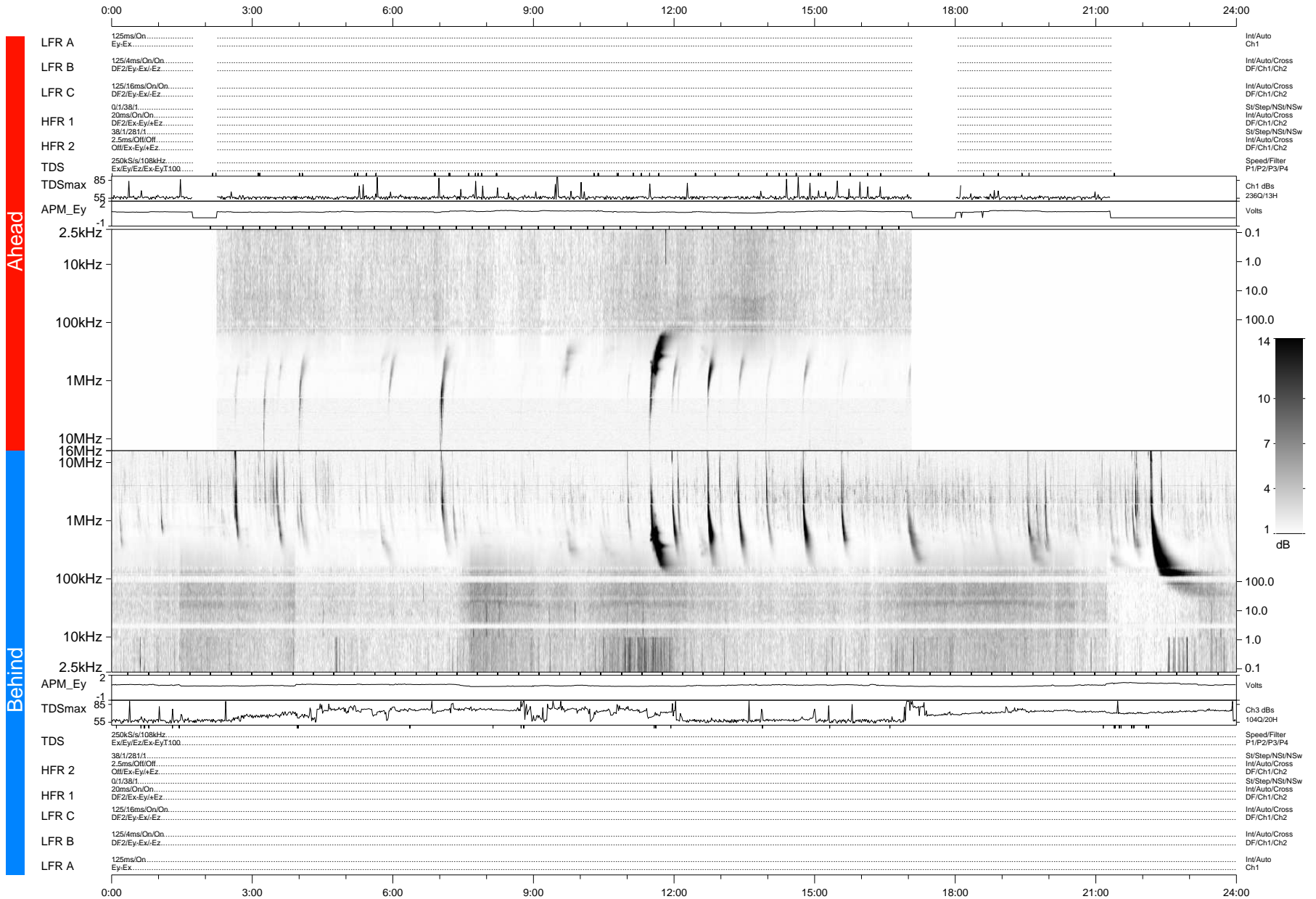


# STEREO/WAVES Daily Summary - 16-Dec-2012 (DOY 351)

Ahead source file: swaves\_ahead\_2012\_351\_1\_11.fin (Recovery: 82.6% HK, 73% Pkts)  
 Ahead PSE Angle: 128.3°

DPU up 62.3d, V412d20



Behind PSE Angle: -129.1°  
 Behind source file: swaves\_behind\_2012\_351\_1\_04.fin (Recovery: 100.0% HK, 72% Pkts)

Time (UTC)

file: stereo\_swaves\_daily-summary\_gray-status\_20121216\_v04  
 made by: space.umn.edu on macOS with IDL 8.8.2 on 2022-10-14 17:24:30, with Tlib V945 / dynspec V311  
 DPU up 148.5d, V410d21