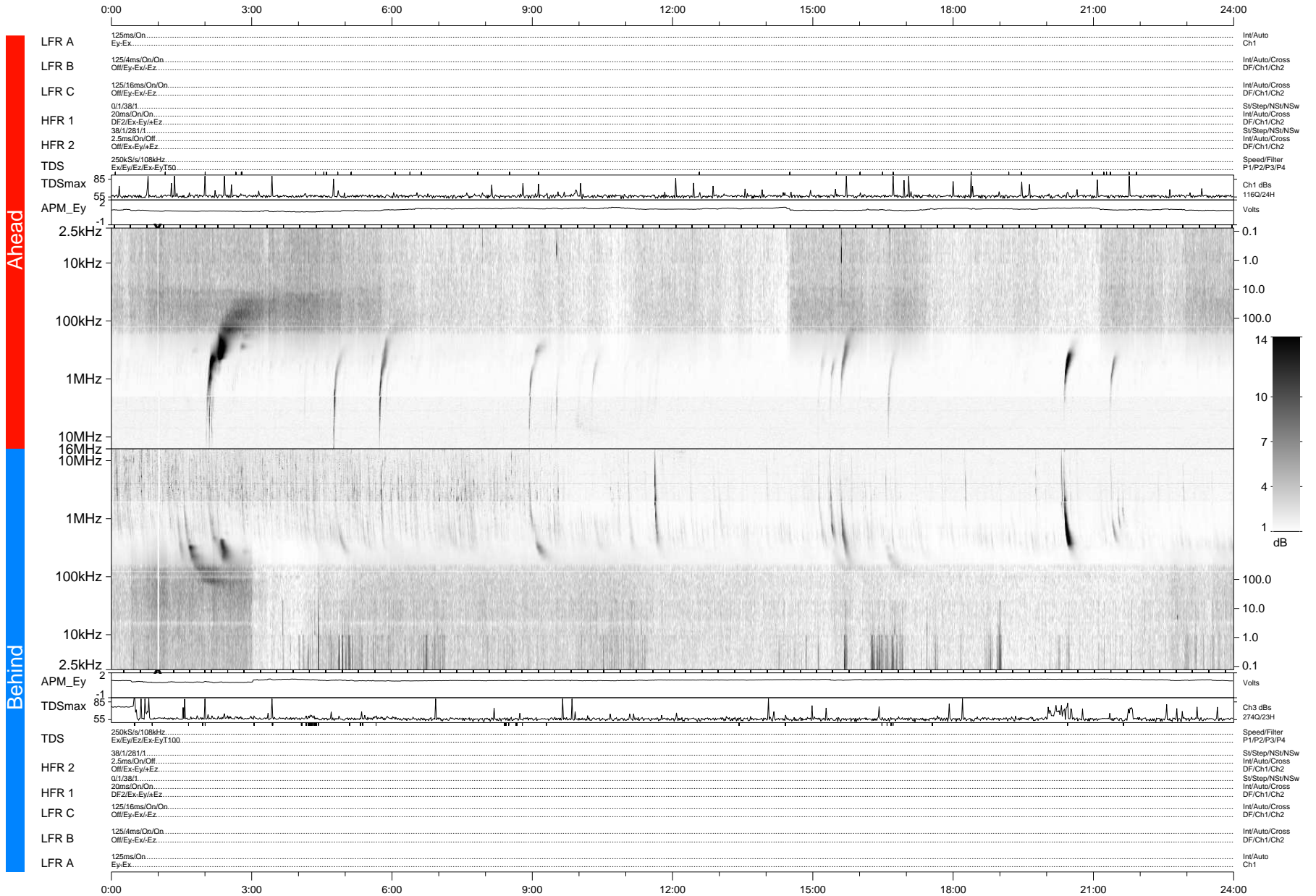


STEREO/WAVES Daily Summary - 25-Nov-2012 (DOY 330)

Ahead source file: swaves_ahead_2012_330_1_04.fin (Recovery: 100.0% HK, 82% Pkts)
 Ahead PSE Angle: 127.8°

DPU up 41.4d, V412d16



Behind PSE Angle: -125.7°
 Behind source file: swaves_behind_2012_330_1_04.fin (Recovery: 100.0% HK, 105% Pkts)

Time (UTC)

file: stereo_swaves_daily-summary_gray-status_20121125_v04 DPU up 127.5d, V410d15
 made by: space.umn.edu on macOS with IDL 8.8.2 on 2022-10-14 16:30:22, with TMLib V945 / dynspec V311