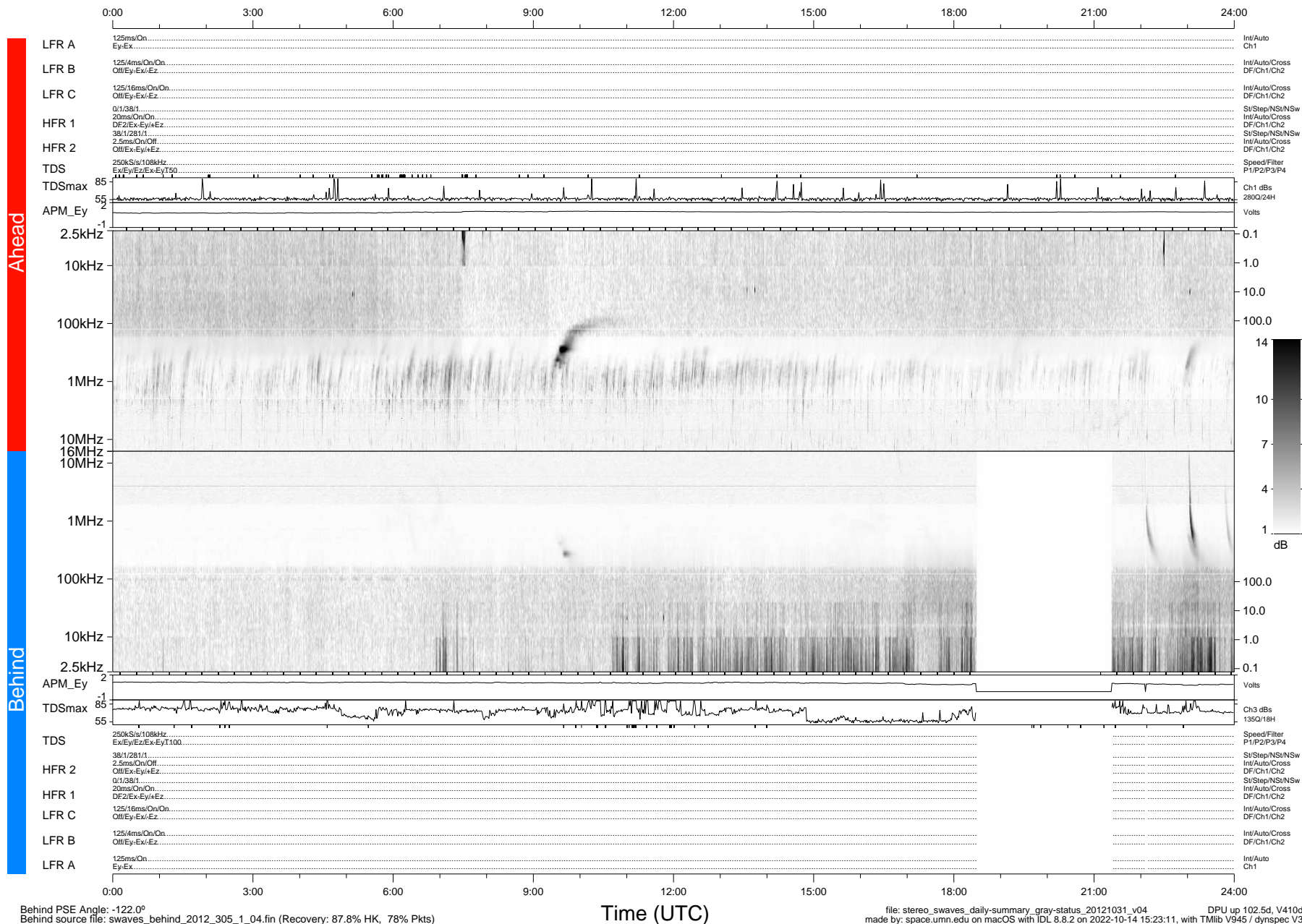


STEREO/WAVES Daily Summary - 31-Oct-2012 (DOY 305)

Ahead source file: swaves_ahead_2012_305_1_04.fin (Recovery: 100.0% HK, 107% Pkts)
 Ahead PSE Angle: 126.9°

DPU up 16.4d, V412d16



Behind PSE Angle: -122.0°
 Behind source file: swaves_behind_2012_305_1_04.fin (Recovery: 87.8% HK, 78% Pkts)

Time (UTC)

file: stereo_swaves_daily-summary_gray-status_20121031_v04 DPU up 102.5d, V410d15
 made by: space.umn.edu on macOS with IDL 8.8.2 on 2022-10-14 15:23:11, with Tmlib V945 / dynspec V311