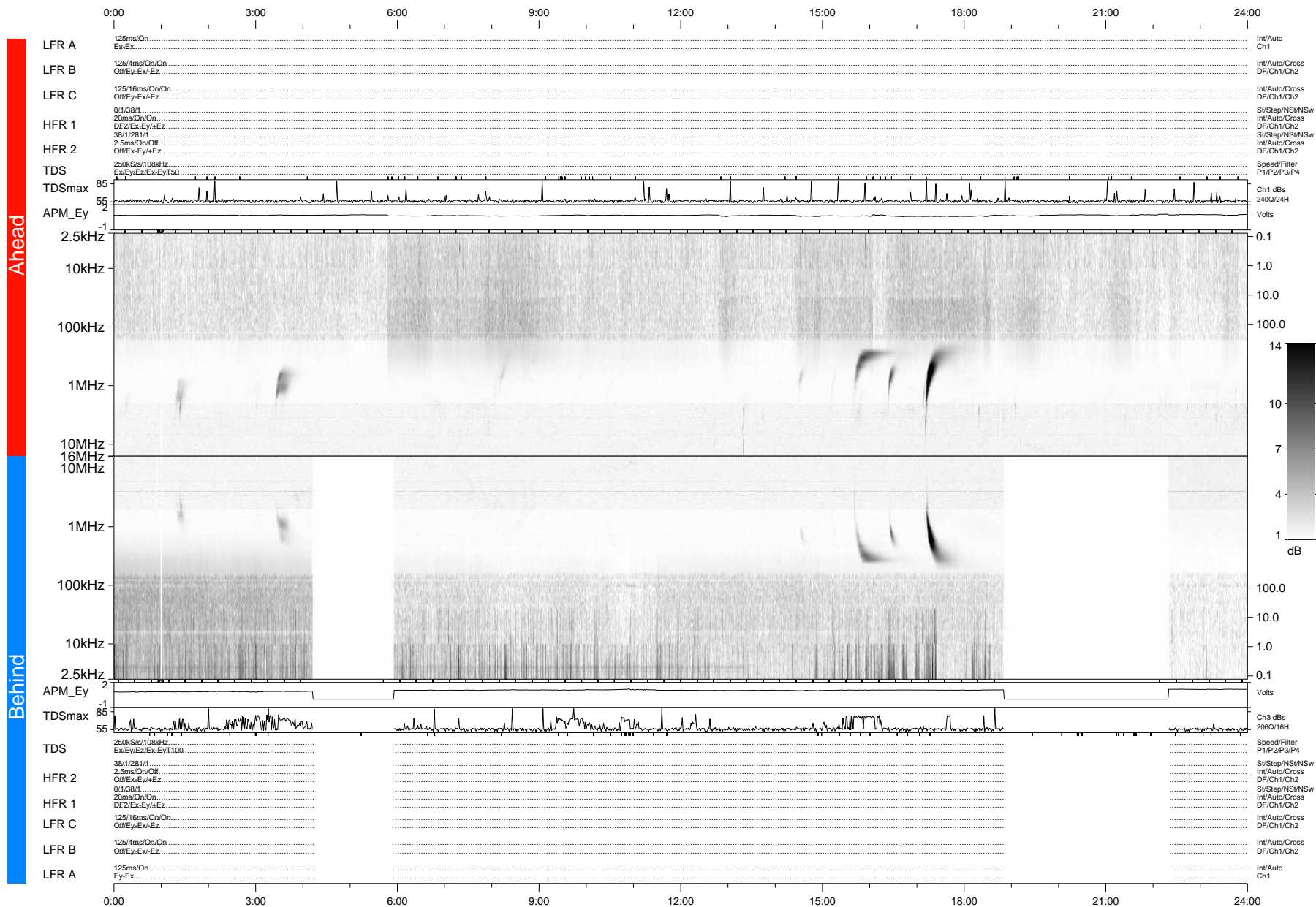


STEREO/WAVES Daily Summary - 28-Oct-2012 (DOY 302)

Ahead source file: swaves_ahead_2012_302_1_04.fin (Recovery: 100.0% HK, 101% Pkts)
 Ahead PSE Angle: 126.8°

DPU up 13.4d, V412d16



Behind PSE Angle: -121.6°
 Behind source file: swaves_behind_2012_302_1_04.fin (Recovery: 78.3% HK, 82% Pkts)

Time (UTC)

file: stereo_swaves_daily-summary_gray-status_20121028_v04 DPU up 99.5d, V410d15
 made by: space.umn.edu on macOS with IDL 8.8.2 on 2022-10-14 15:14:53, with TMLib V945 / dynspec V311