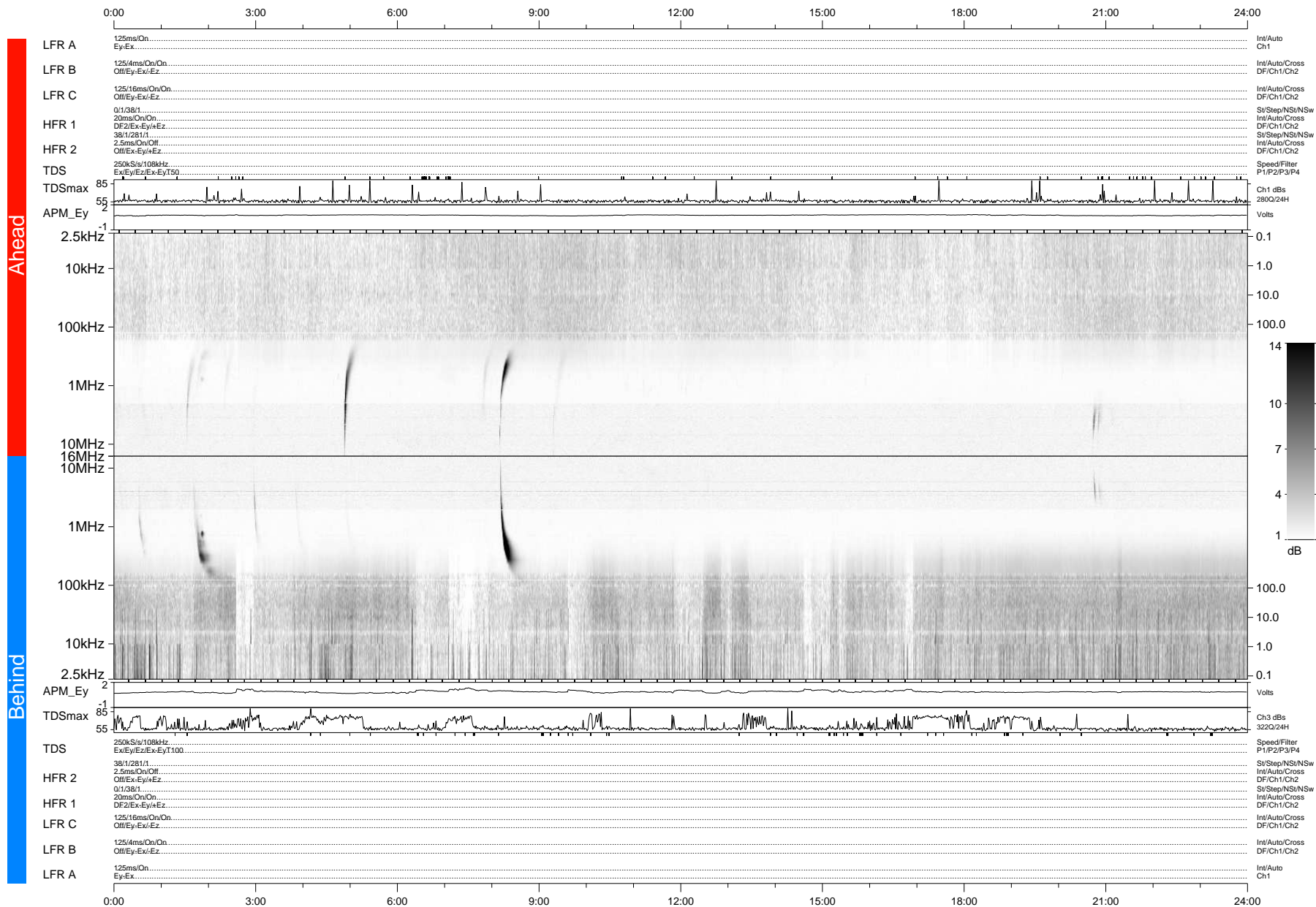


STEREO/WAVES Daily Summary - 27-Oct-2012 (DOY 301)

Ahead source file: swaves_ahead_2012_301_1_04.fin (Recovery: 100.0% HK, 107% Pkts)
 Ahead PSE Angle: 126.8°

DPU up 12.4d, V412d16



Behind PSE Angle: -121.4°
 Behind source file: swaves_behind_2012_301_1_04.fin (Recovery: 100.0% HK, 113% Pkts)

Time (UTC)

file: stereo_swaves_daily-summary_gray-status_20121027_v04 DPU up 98.5d, V410d15
 made by: space.umn.edu on macOS with IDL 8.8.2 on 2022-10-14 15:12:13, with TMLib V945 / dynspec V311