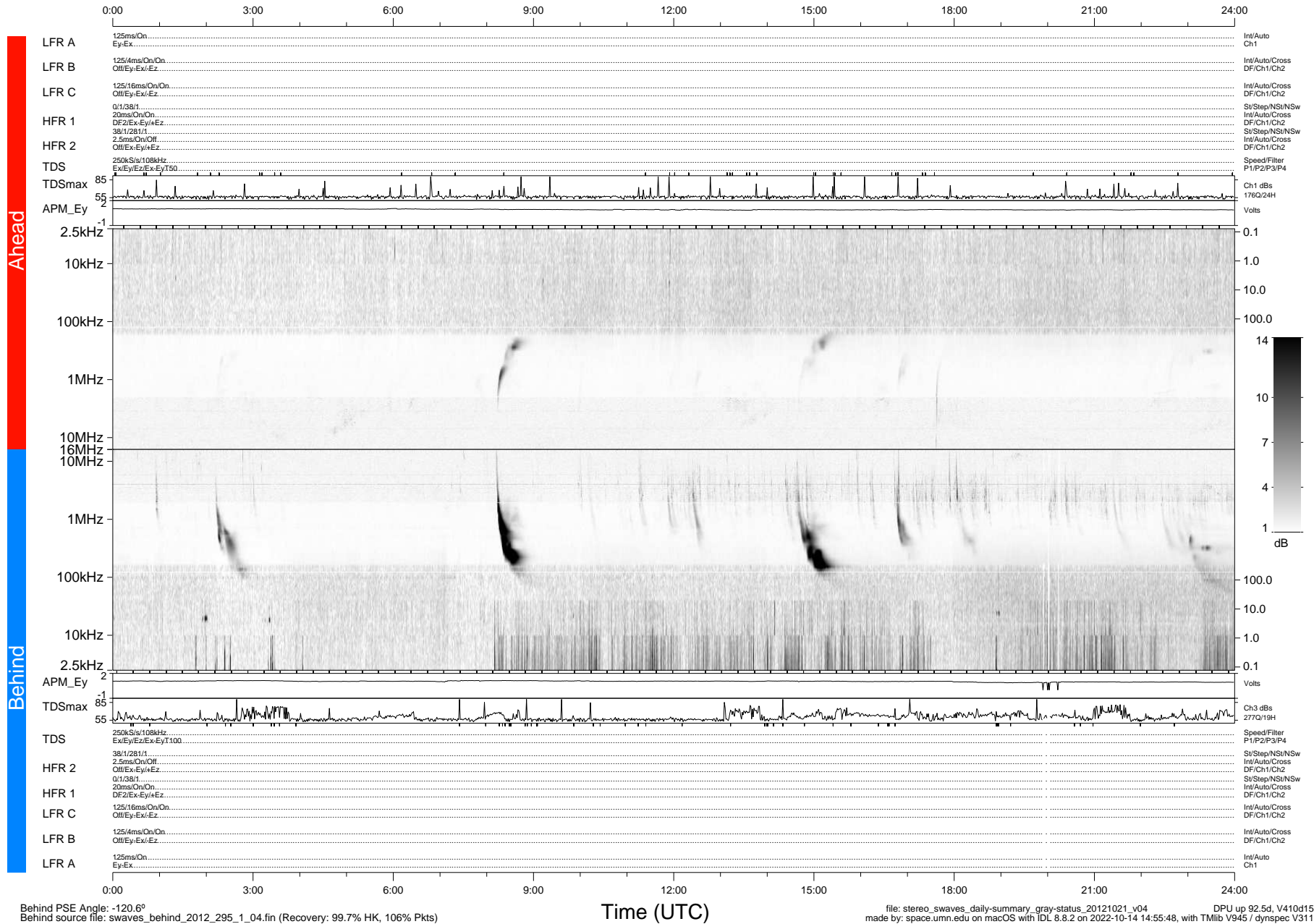


STEREO/WAVES Daily Summary - 21-Oct-2012 (DOY 295)

Ahead source file: swaves_ahead_2012_295_1_04.fin (Recovery: 100.0% HK, 91% Pkts)
 Ahead PSE Angle: 126.6°

DPU up 6.4d, V412d16



Behind PSE Angle: -120.6°
 Behind source file: swaves_behind_2012_295_1_04.fin (Recovery: 99.7% HK, 106% Pkts)

Time (UTC)

file: stereo_swaves_daily-summary_gray-status_20121021_v04
 made by: space.umn.edu on macOS with IDL 8.8.2 on 2022-10-14 14:55:48, with TMLib V945 / dynspec V311
 DPU up 92.5d, V410d15