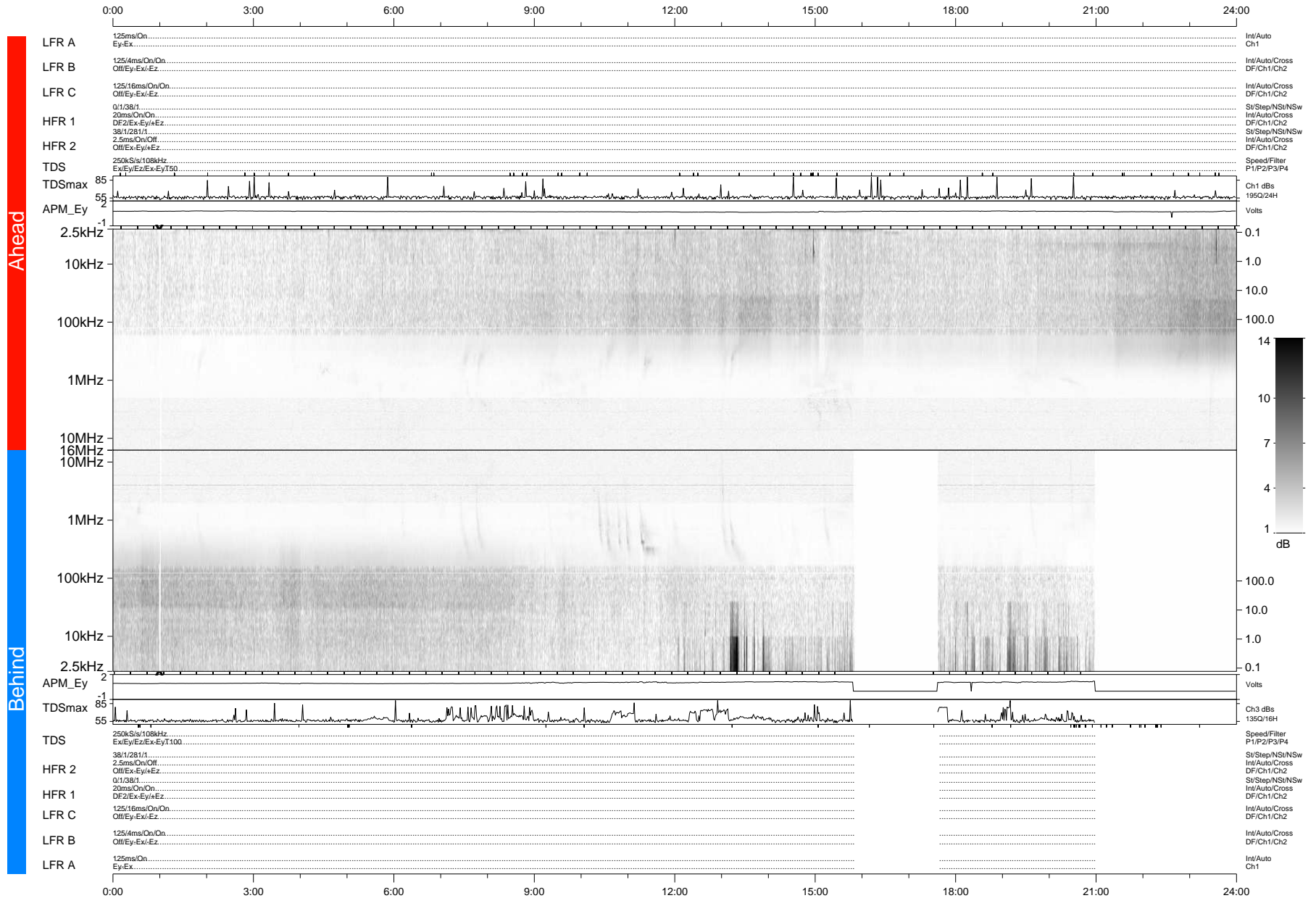


STEREO/WAVES Daily Summary - 18-Oct-2012 (DOY 292)

Ahead source file: swaves_ahead_2012_292_1_04.fin (Recovery: 99.9% HK, 94% Pkts)
 Ahead PSE Angle: 126.5°

DPU up 3.4d, V412d16



Behind PSE Angle: -120.2°
 Behind source file: swaves_behind_2012_292_1_04.fin (Recovery: 79.9% HK, 72% Pkts)

Time (UTC)

file: stereo_swaves_daily-summary_gray-status_20121018_v04 DPU up 89.3d, V410d15
 made by: space.umn.edu on macOS with IDL 8.8.2 on 2022-10-14 14:47:22, with Tlib V945 / dynspec V311