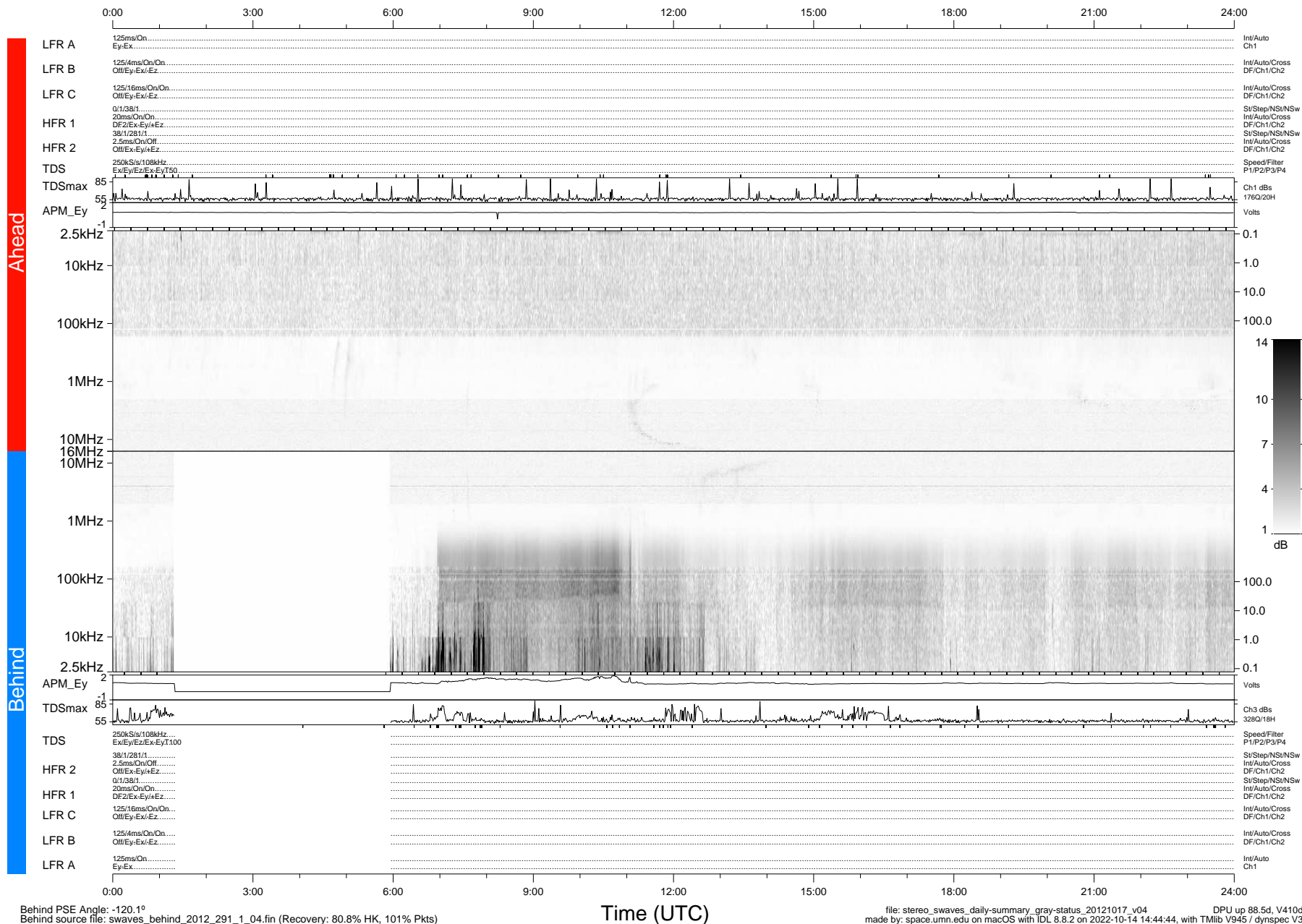


# STEREO/WAVES Daily Summary - 17-Oct-2012 (DOY 291)

Ahead source file: swaves\_ahead\_2012\_291\_1\_04.fin (Recovery: 100.1% HK, 91% Pkts)  
 Ahead PSE Angle: 126.4°

DPU up 2.4d, V412d16



Behind PSE Angle: -120.1°  
 Behind source file: swaves\_behind\_2012\_291\_1\_04.fin (Recovery: 80.8% HK, 101% Pkts)

Time (UTC)

file: stereo\_swaves\_daily-summary\_gray-status\_20121017\_v04 DPU up 88.5d, V410d15  
 made by: space.umn.edu on macOS with IDL 8.8.2 on 2022-10-14 14:44:44, with TMLib V945 / dynspec V311