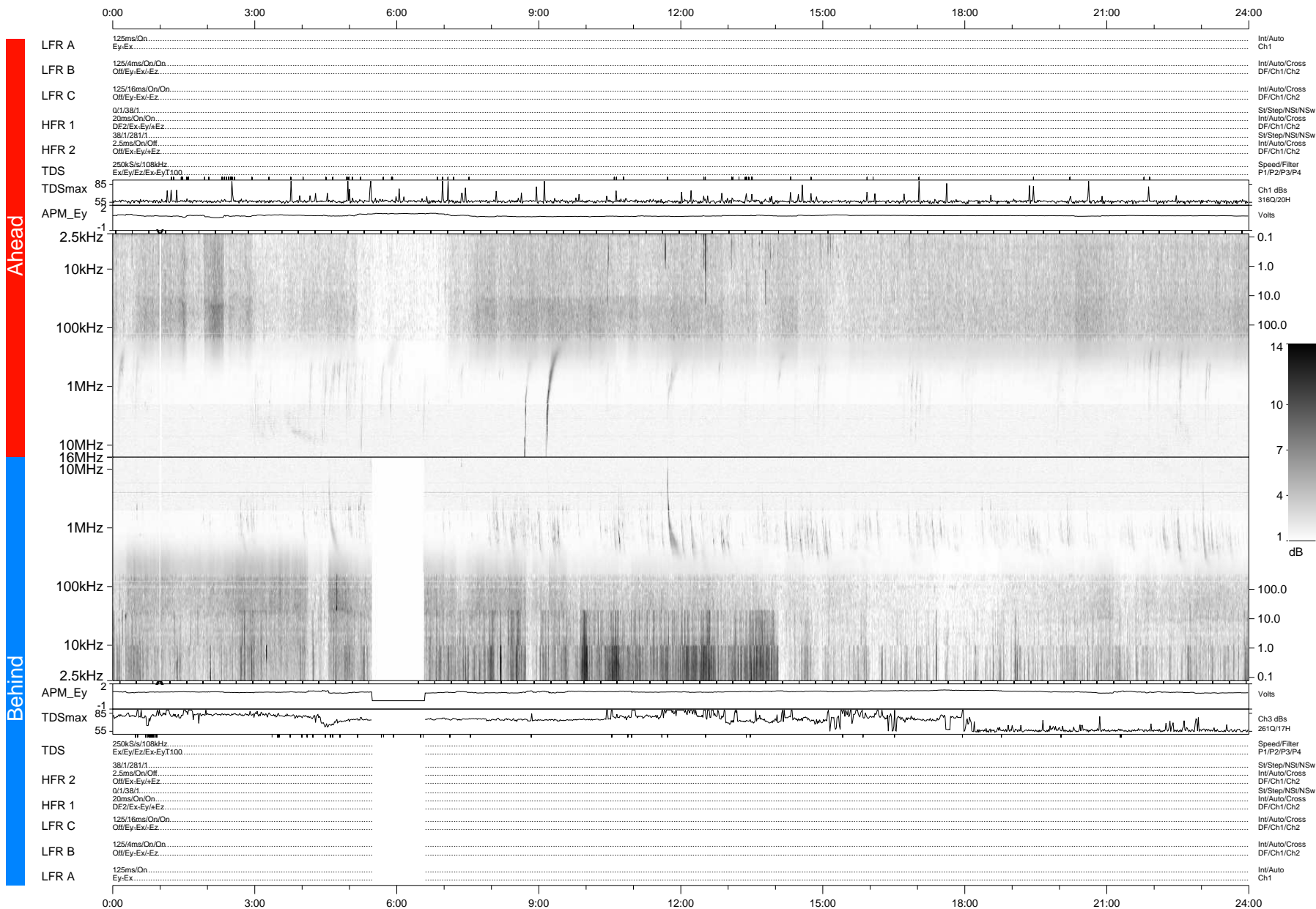


# STEREO/WAVES Daily Summary - 12-Oct-2012 (DOY 286)

Ahead source file: swaves\_ahead\_2012\_286\_1\_04.fin (Recovery: 100.0% HK, 112% Pkts)  
 Ahead PSE Angle: 126.2°

DPU up 1165.4d, V410d14



Behind PSE Angle: -119.5°  
 Behind source file: swaves\_behind\_2012\_286\_1\_04.fin (Recovery: 95.3% HK, 101% Pkts)

Time (UTC)

file: stereo\_swaves\_daily-summary\_gray-status\_20121012\_v04 DPU up 83.5d, V410d15  
 made by: space.umn.edu on macOS with IDL 8.8.2 on 2022-10-14 14:30:42, with TMIlib V945 / dynspec V311