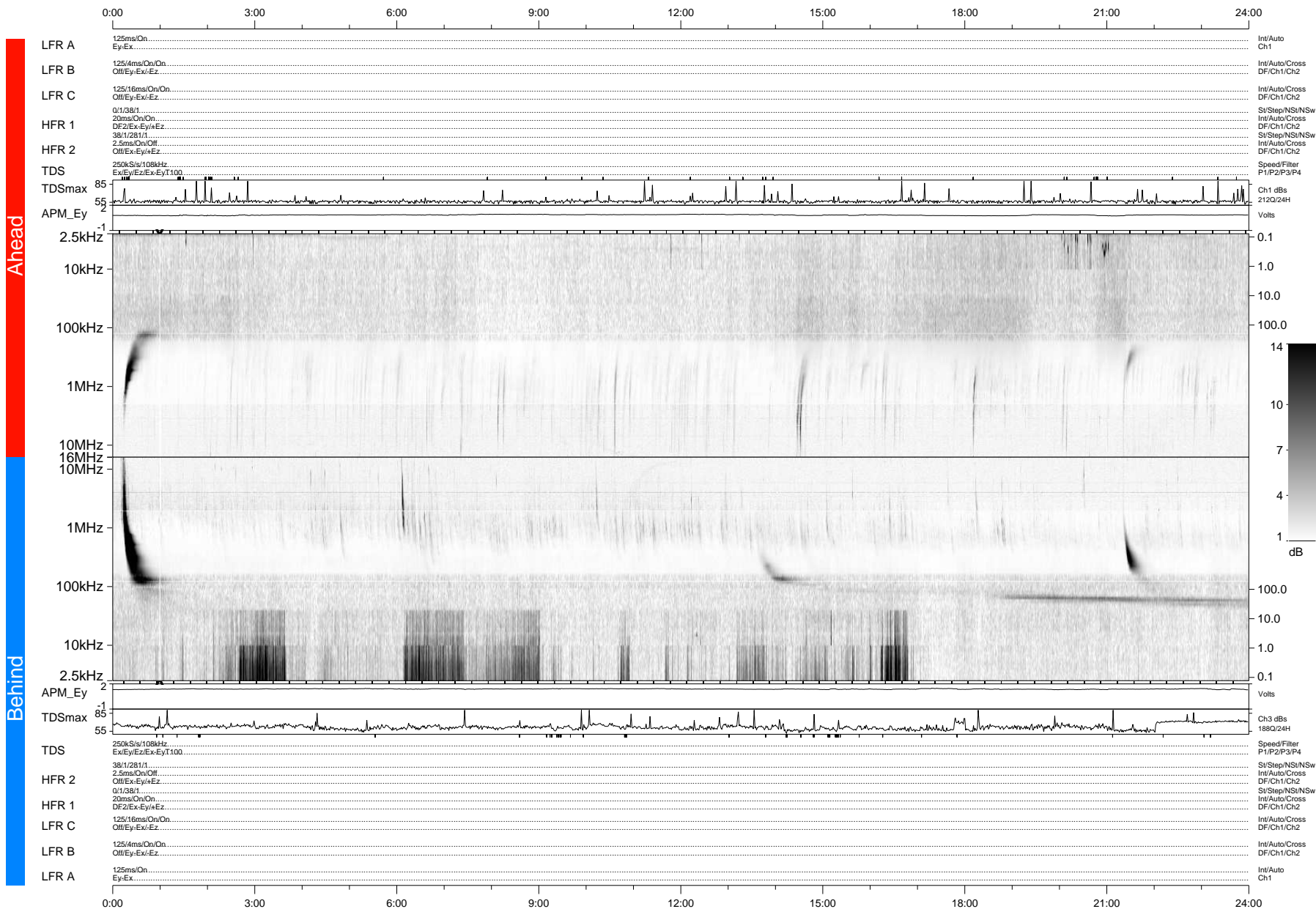


STEREO/WAVES Daily Summary - 10-Oct-2012 (DOY 284)

Ahead source file: swaves_ahead_2012_284_1_04.fin (Recovery: 100.0% HK, 97% Pkts)
 Ahead PSE Angle: 126.1°

DPU up 1163.4d, V410d14



Behind PSE Angle: -119.3°
 Behind source file: swaves_behind_2012_284_1_04.fin (Recovery: 100.0% HK, 93% Pkts)

Time (UTC)

file: stereo_swaves_daily-summary_gray-status_20121010_v04 DPU up 81.5d, V410d15
 made by: space.umn.edu on macOS with IDL 8.8.2 on 2022-10-14 14:25:01, with TLib V945 / dynspec V311