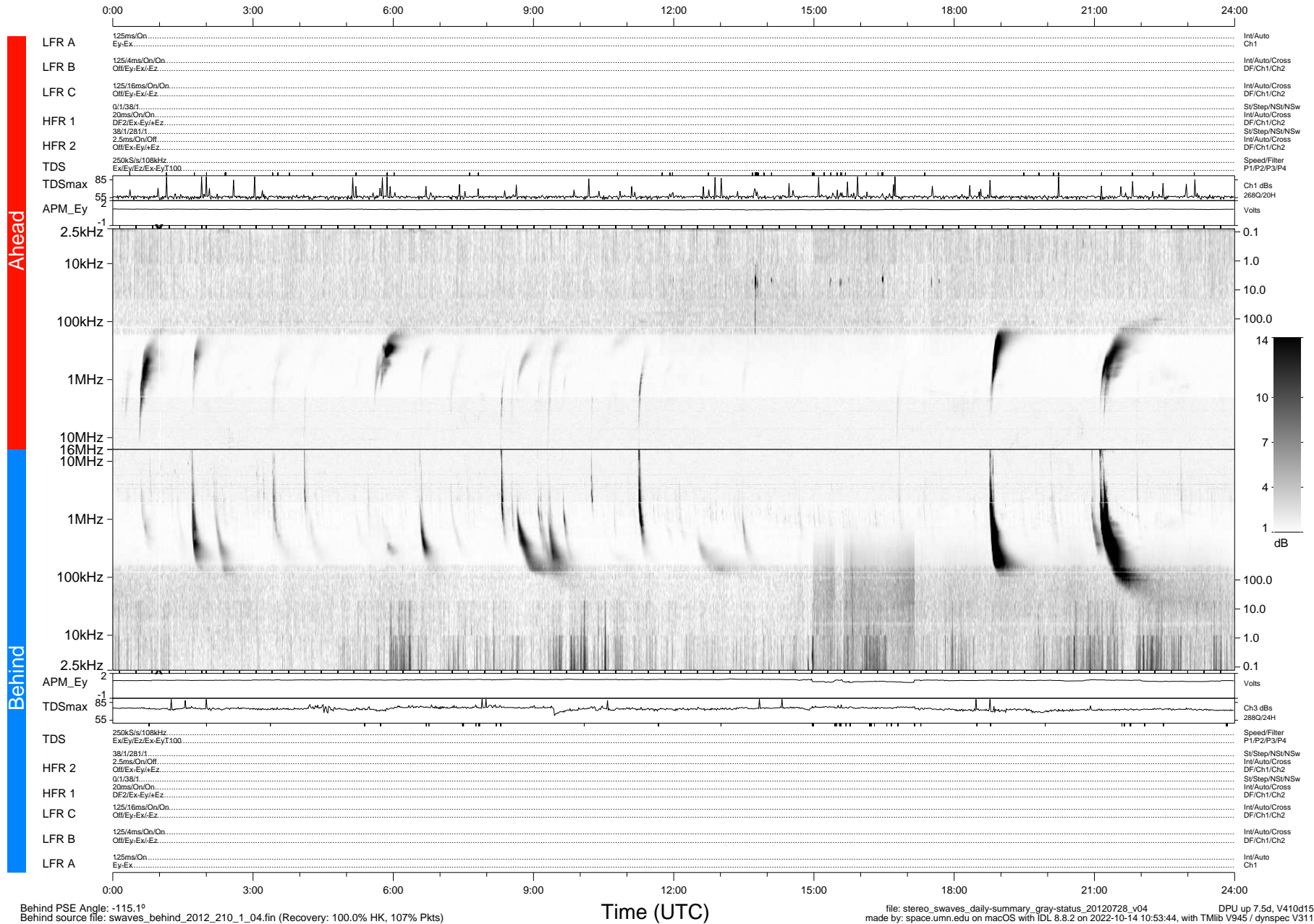


STEREO/WAVES Daily Summary - 28-Jul-2012 (DOY 210)

Ahead source file: swaves_ahead_2012_210_1_04.fin (Recovery: 100.0% HK, 104% Pkts)
 Ahead PSE Angle: 121.3°

DPU up 1089.4d, V410d14



Behind PSE Angle: -115.1°
 Behind source file: swaves_behind_2012_210_1_04.fin (Recovery: 100.0% HK, 107% Pkts)

file: stereo_swaves_daily-summary_gray-status_20120728_v04 DPU up 7.5d, V410d15
 made by: space.umn.edu on macOS with IDL 8.8.2 on 2022-10-14 10:53:44, with TMLib V945 / dynspec V311