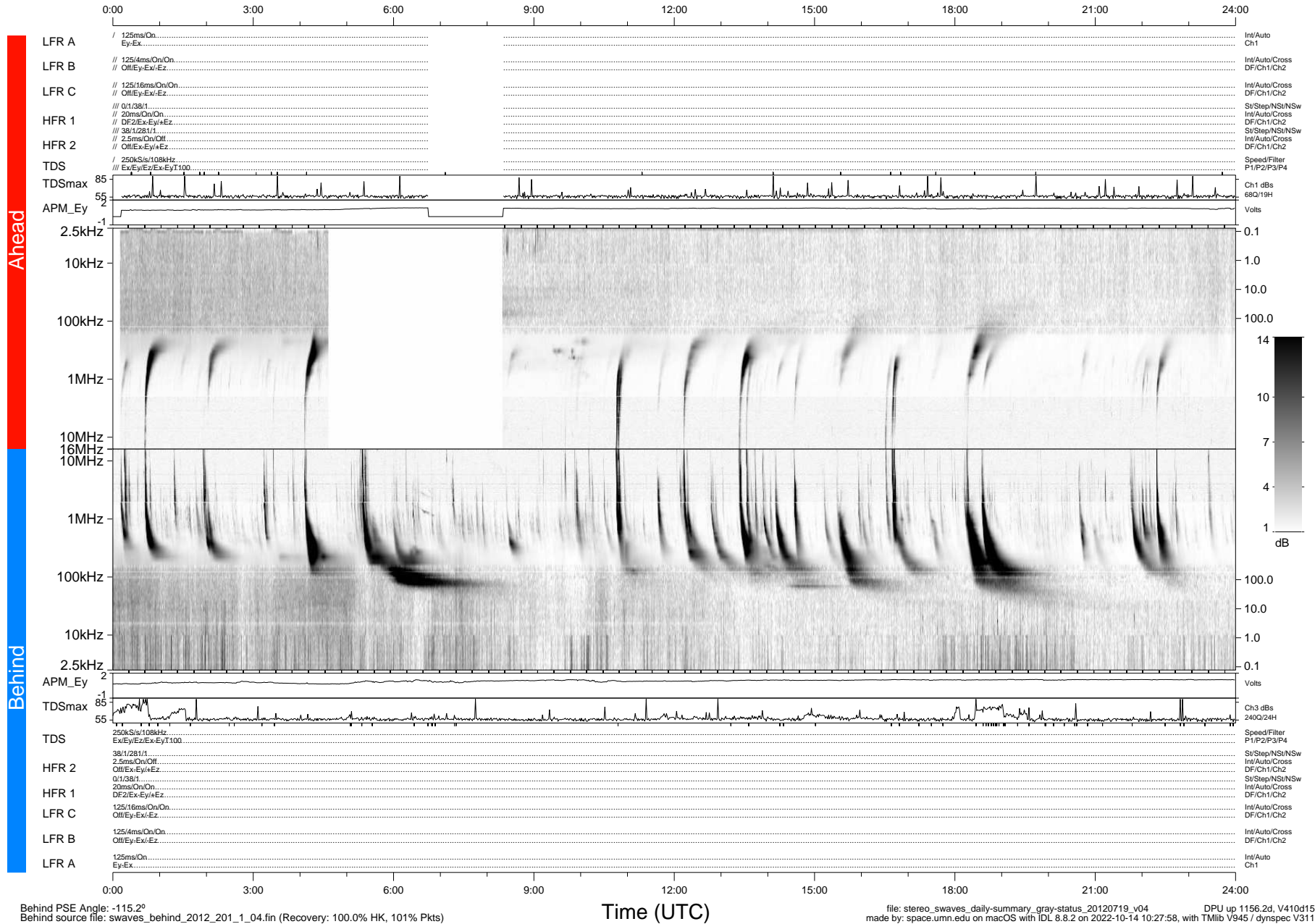


STEREO/WAVES Daily Summary - 19-Jul-2012 (DOY 201)

Ahead source file: swaves_ahead_2012_201_1_04.fin (Recovery: 92.6% HK, 65% Pkts)
 Ahead PSE Angle: 120.6°

DPU up 1080.4d, V410d14



Behind PSE Angle: -115.2°
 Behind source file: swaves_behind_2012_201_1_04.fin (Recovery: 100.0% HK, 101% Pkts)

file: stereo_swaves_daily-summary_gray-status_20120719_v04 DPU up 1156.2d, V410d15
 made by: space.umn.edu on macOS with IDL 8.8.2 on 2022-10-14 10:27:58, with TLib V945 / dynspec V311