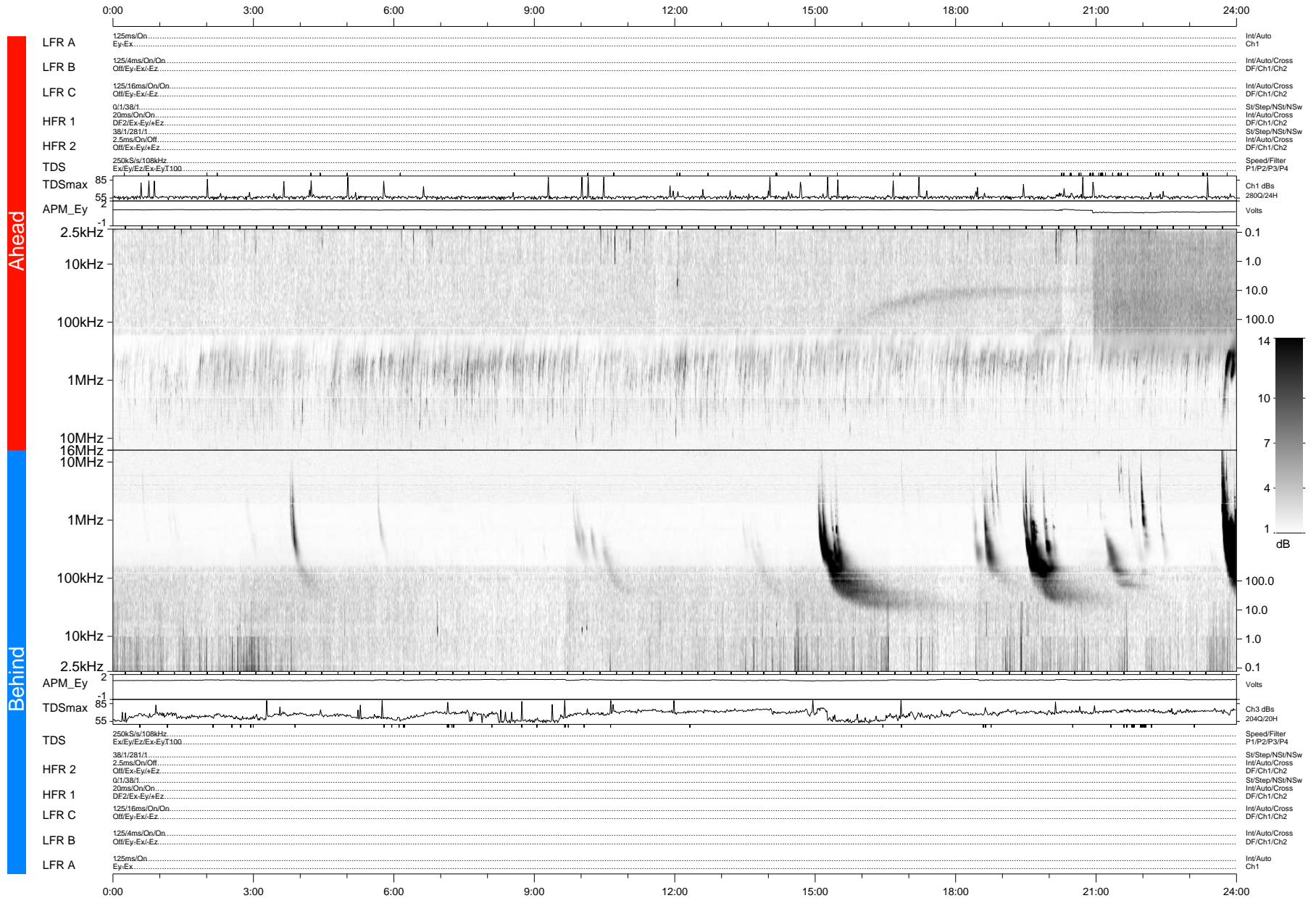


STEREO/WAVES Daily Summary - 25-Jun-2012 (DOY 177)

Ahead source file: swaves_ahead_2012_177_1_04.fin (Recovery: 100.0% HK, 107% Pkts)
 Ahead PSE Angle: 118.4°

DPU up 1056.4d, V410d14



Behind PSE Angle: -115.9°
 Behind source file: swaves_behind_2012_177_1_04.fin (Recovery: 100.0% HK, 95% Pkts)

Time (UTC)

file: stereo_swaves_daily-summary_gray-status_20120625_v04 DPU up 1132.2d, V410d15
 made by: space.umn.edu on macOS with IDL 8.8.2 on 2022-10-14 09:20:15, with Tlib V945 / dynspec V311