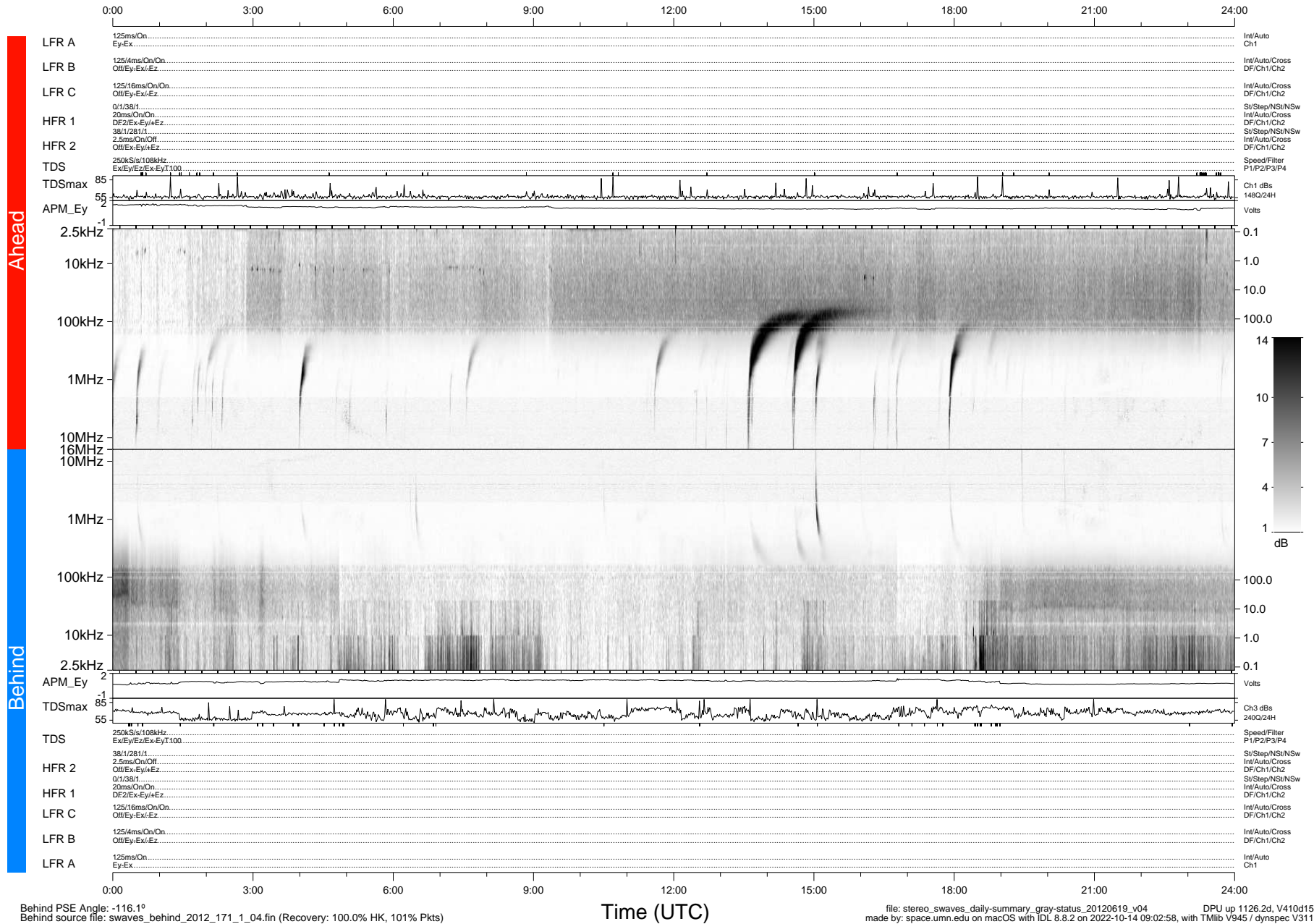


STEREO/WAVES Daily Summary - 19-Jun-2012 (DOY 171)

Ahead source file: swaves_ahead_2012_171_1_05.fin (Recovery: 100.0% HK, 87% Pkts)
 Ahead PSE Angle: 117.8°

DPU up 1050.4d, V410d14



Behind PSE Angle: -116.1°
 Behind source file: swaves_behind_2012_171_1_04.fin (Recovery: 100.0% HK, 101% Pkts)

file: stereo_swaves_daily-summary_gray-status_20120619_v04 DPU up 1126.2d, V410d15
 made by: space.umn.edu on macOS with IDL 8.8.2 on 2022-10-14 09:02:58, with Tlib V945 / dynspec V311