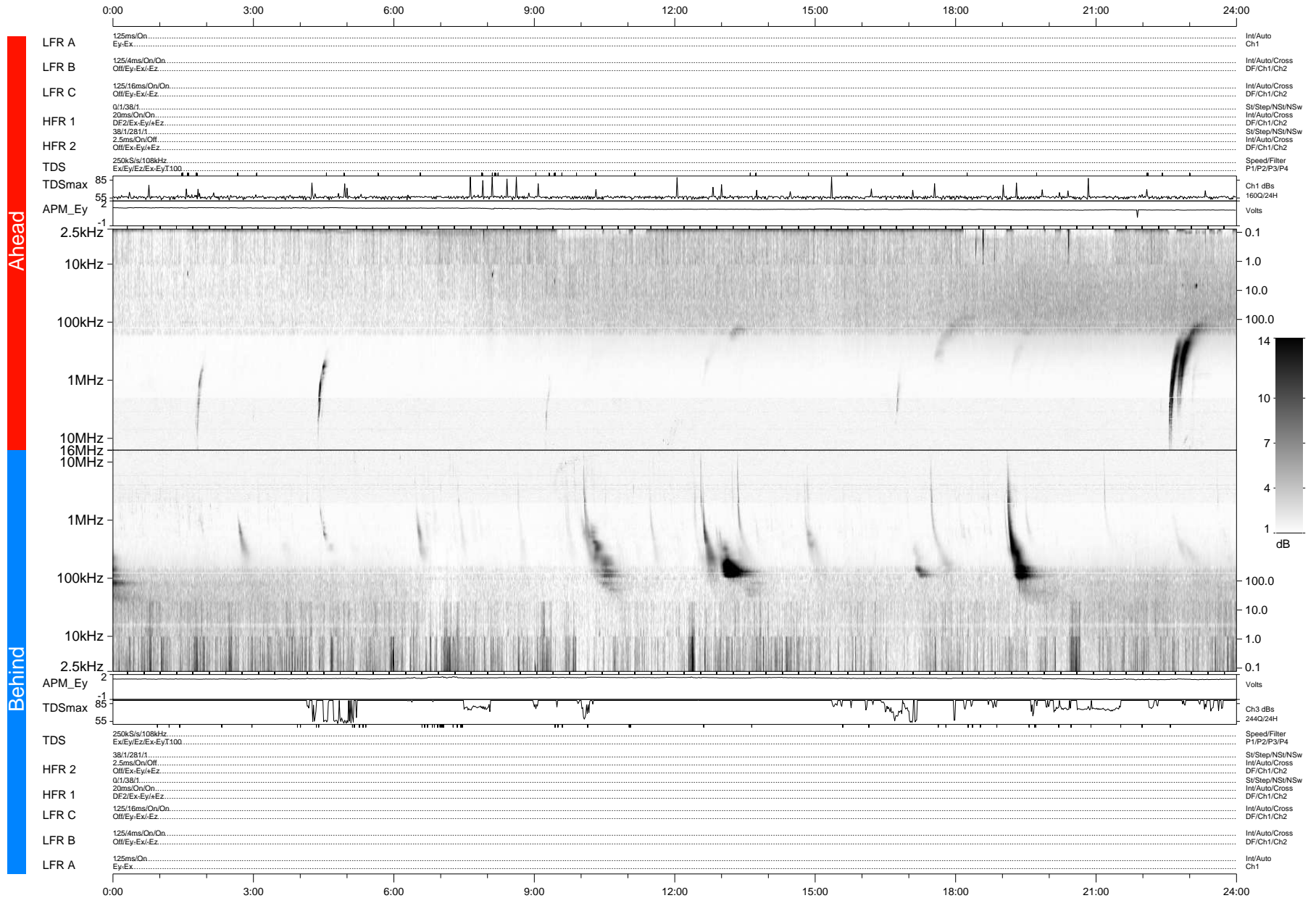


STEREO/WAVES Daily Summary - 01-Jun-2012 (DOY 153)

Ahead source file: swaves_ahead_2012_153_1_04.fin (Recovery: 100.1% HK, 89% Pkts)
 Ahead PSE Angle: -116.2°

DPU up 1032.4d, V410d14



Behind PSE Angle: -116.9°
 Behind source file: swaves_behind_2012_153_1_04.fin (Recovery: 100.0% HK, 101% Pkts)

Time (UTC)

file: stereo_swaves_daily-summary_gray-status_20120601_v04 DPU up 1108.2d, V410d15
 made by: space.umn.edu on macOS with IDL 8.8.2 on 2022-10-14 08:11:21, with TMLib V945 / dynspec V311