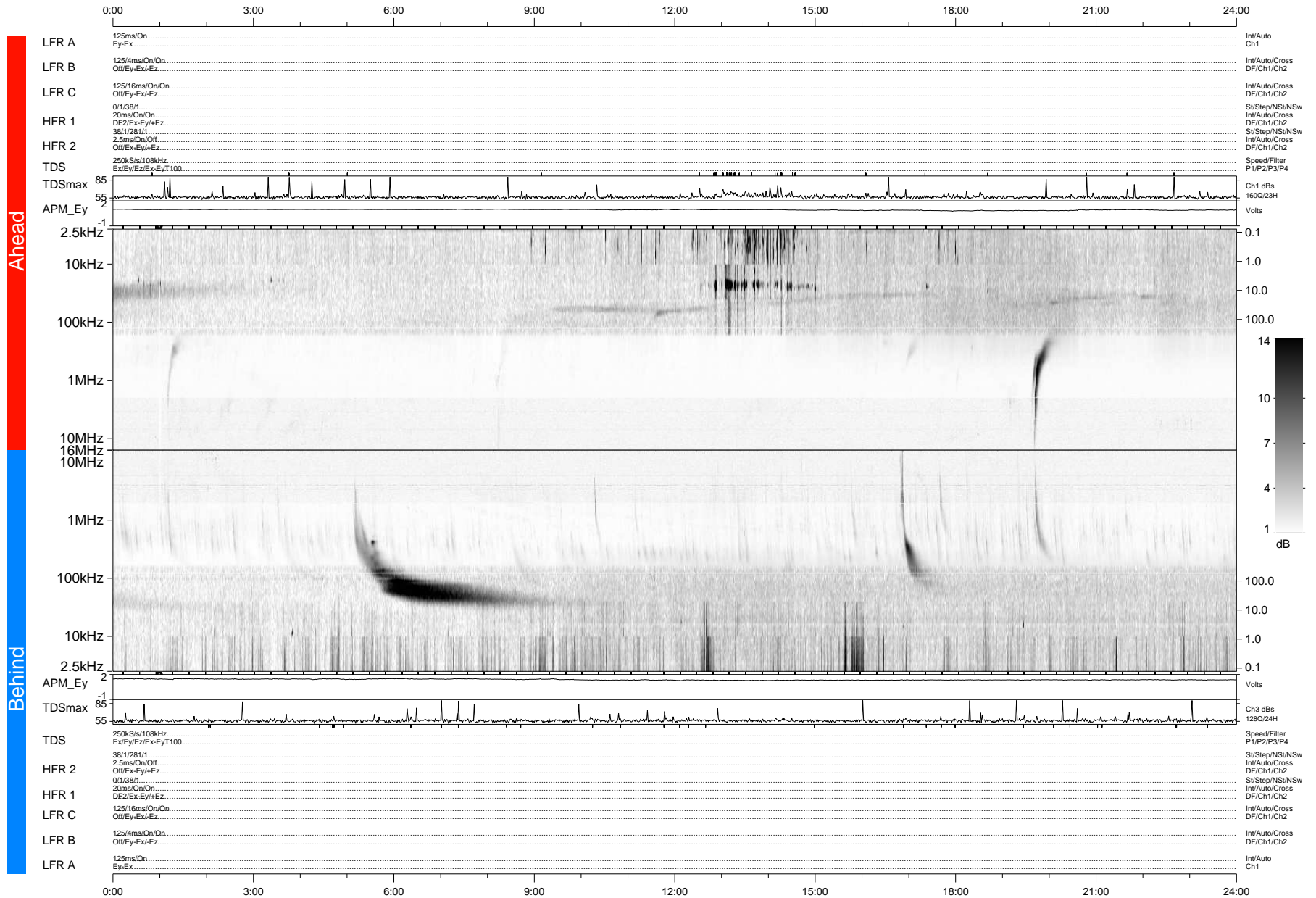


# STEREO/WAVES Daily Summary - 27-May-2012 (DOY 148)

Ahead source file: swaves\_ahead\_2012\_148\_1\_04.fin (Recovery: 100.0% HK, 89% Pkts)  
 Ahead PSE Angle: 115.7°

DPU up 1027.4d, V410d14



Behind PSE Angle: -117.2°  
 Behind source file: swaves\_behind\_2012\_148\_1\_04.fin (Recovery: 100.0% HK, 84% Pkts)

Time (UTC)

file: stereo\_swaves\_daily-summary\_gray-status\_20120527\_v04 DPU up 1103.2d, V410d15  
 made by: space.umn.edu on macOS with IDL 8.8.2 on 2022-10-14 07:57:04, with TLib V945 / dynspec V311