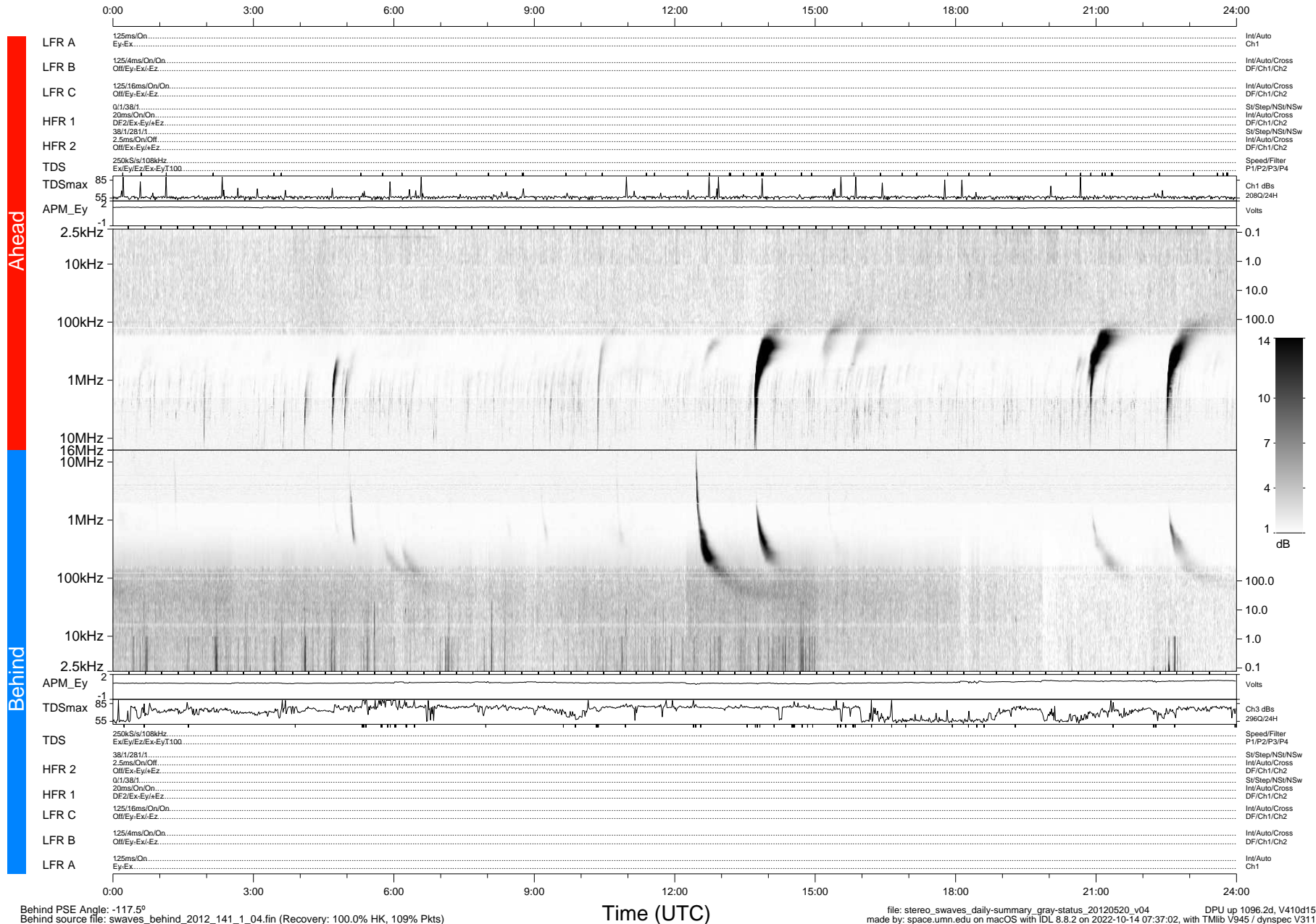


STEREO/WAVES Daily Summary - 20-May-2012 (DOY 141)

Ahead source file: swaves_ahead_2012_141_1_04.fin (Recovery: 100.0% HK, 96% Pkts)
 Ahead PSE Angle: 115.0°

DPU up 1020.4d, V410d14



Behind PSE Angle: -117.5°
 Behind source file: swaves_behind_2012_141_1_04.fin (Recovery: 100.0% HK, 109% Pkts)

Time (UTC)

file: stereo_swaves_daily-summary_gray-status_20120520_v04 DPU up 1096.2d, V410d15
 made by: space.umn.edu on macOS with IDL 8.8.2 on 2022-10-14 07:37:02, with Tlib V945 / dynspec V311