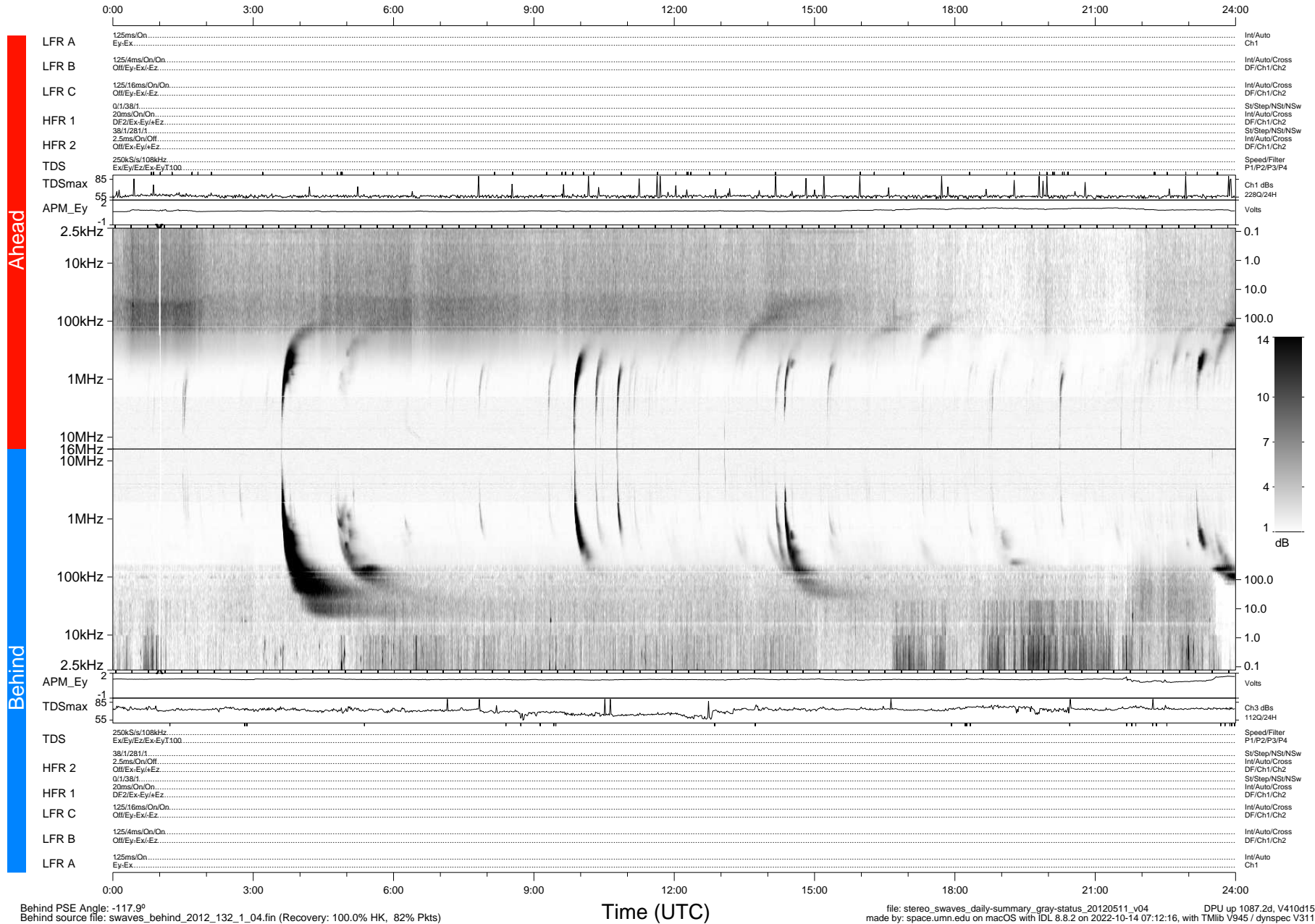


STEREO/WAVES Daily Summary - 11-May-2012 (DOY 132)

Ahead source file: swaves_ahead_2012_132_1_04.fin (Recovery: 100.0% HK, 99% Pkts)
 Ahead PSE Angle: 114.3°

DPU up 1011.4d, V410d14



Behind PSE Angle: -117.9°
 Behind source file: swaves_behind_2012_132_1_04.fin (Recovery: 100.0% HK, 82% Pkts)

file: stereo_swaves_daily-summary_gray-status_20120511_v04 DPU up 1087.2d, V410d15
 made by: space.umn.edu on macOS with IDL 8.8.2 on 2022-10-14 07:12:16, with Tlib V945 / dynspec V311