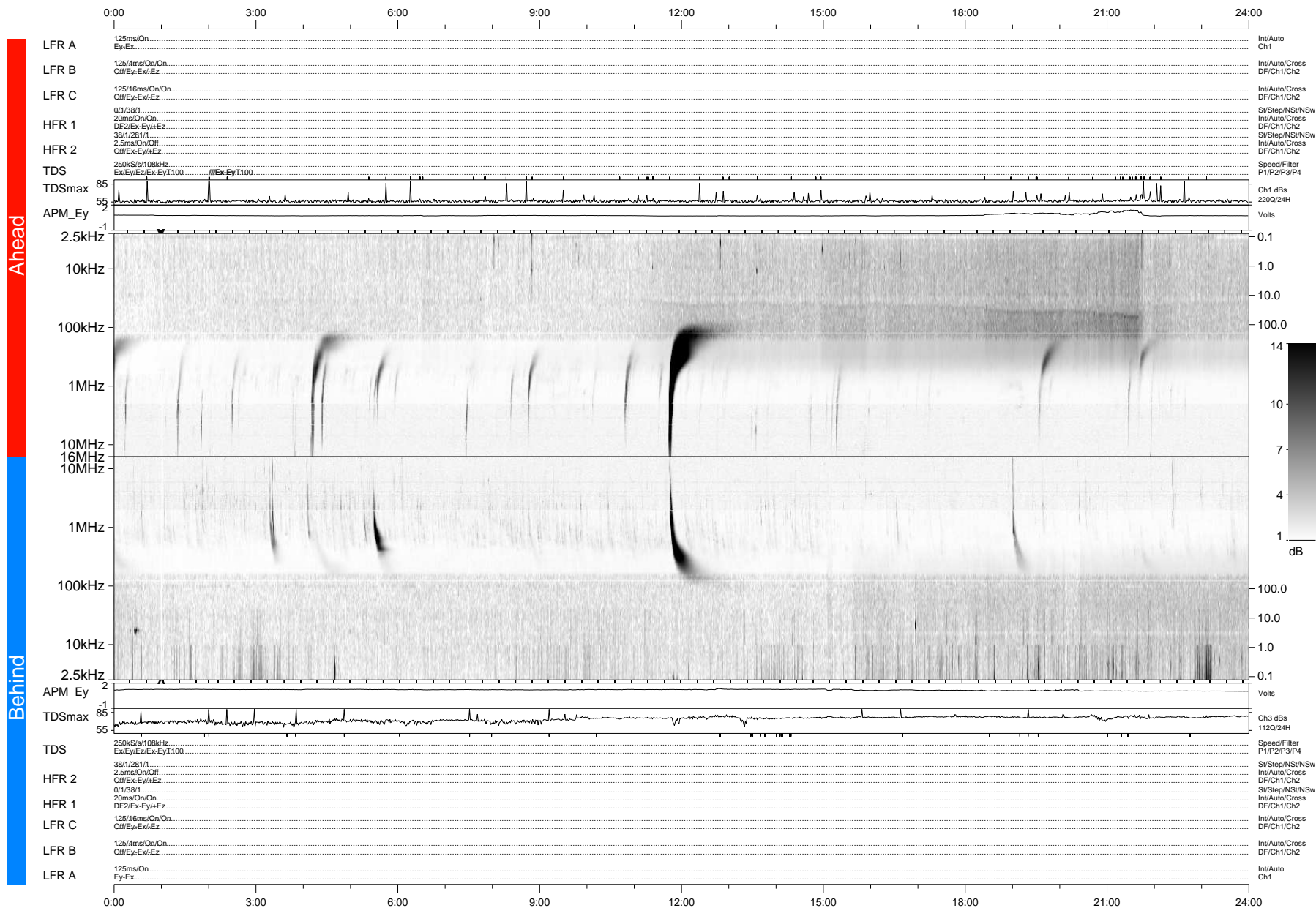


# STEREO/WAVES Daily Summary - 29-Apr-2012 (DOY 120)

Ahead source file: swaves\_ahead\_2012\_120\_1\_04.fin (Recovery: 100.0% HK, 97% Pkts)  
 Ahead PSE Angle: 113.2°

DPU up 999.4d, V410d14



Behind PSE Angle: -118.3°  
 Behind source file: swaves\_behind\_2012\_120\_1\_04.fin (Recovery: 100.0% HK, 82% Pkts)

Time (UTC)

file: stereo\_swaves\_daily-summary\_gray-status\_20120429\_v04 DPU up 1075.2d, V410d15  
 made by: space.umn.edu on macOS with IDL 8.8.2 on 2022-10-14 06:37:45, with Tlib V945 / dynspec V311