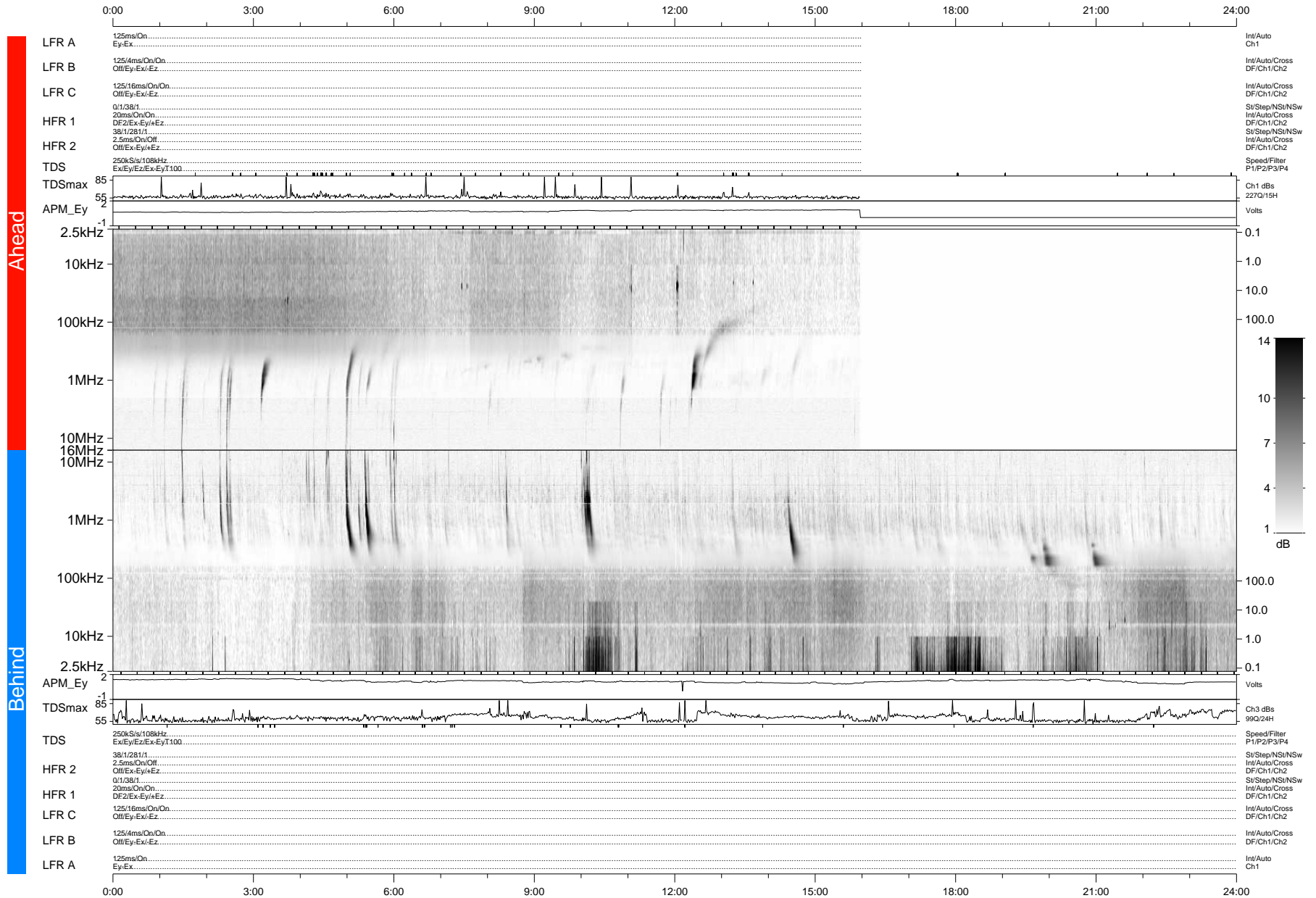


STEREO/WAVES Daily Summary - 20-Apr-2012 (DOY 111)

Ahead source file: swaves_ahead_2012_111_1_05.fin (Recovery: 66.5% HK, 77% Pkts)
 Ahead PSE Angle: 112.5°

DPU up 990.1d, V410d14



Behind PSE Angle: -118.5°
 Behind source file: swaves_behind_2012_111_1_05.fin (Recovery: 99.9% HK, 80% Pkts)

Time (UTC)

file: stereo_swaves_daily-summary_gray-status_20120420_v04 DPU up 1066.2d, V410d15
 made by: space.umn.edu on macOS with IDL 8.8.2 on 2022-10-14 06:11:59, with Tlib V945 / dynspec V311