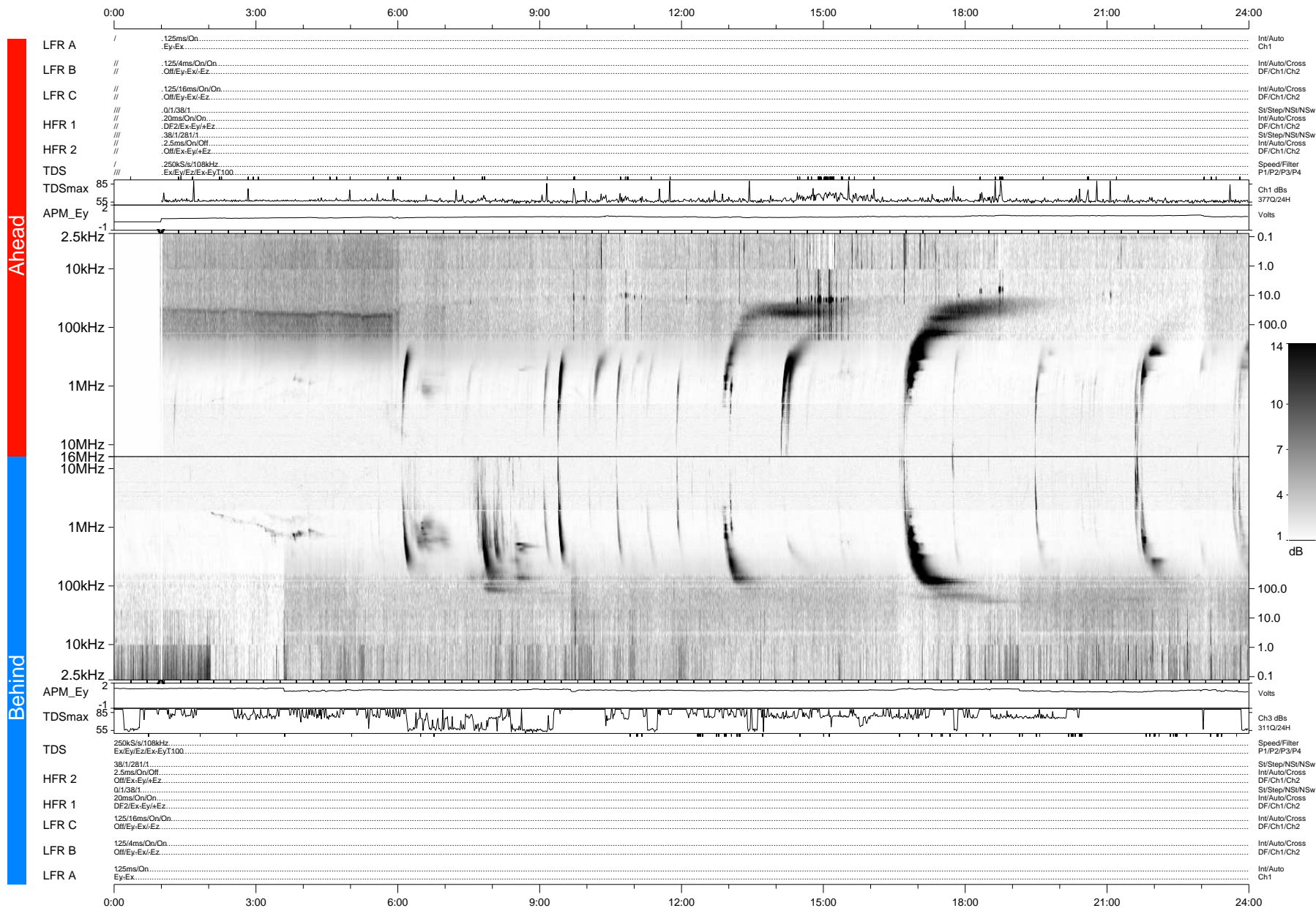


STEREO/WAVES Daily Summary - 17-Apr-2012 (DOY 108)

Ahead source file: swaves_ahead_2012_108_1_05.fin (Recovery: 95.8% HK, 119% Pkts)
 Ahead PSE Angle: 112.2°

DPU up 987.4d, V410d14



Behind PSE Angle: -118.6°
 Behind source file: swaves_behind_2012_108_1_05.fin (Recovery: 100.0% HK, 111% Pkts)

Time (UTC)

file: stereo_swaves_daily-summary_gray-status_20120417_v04 DPU up 1063.2d, V410d15
 made by: space.umn.edu on macOS with IDL 8.8.2 on 2022-10-14 06:03:59, with Tlib V945 / dynspec V311