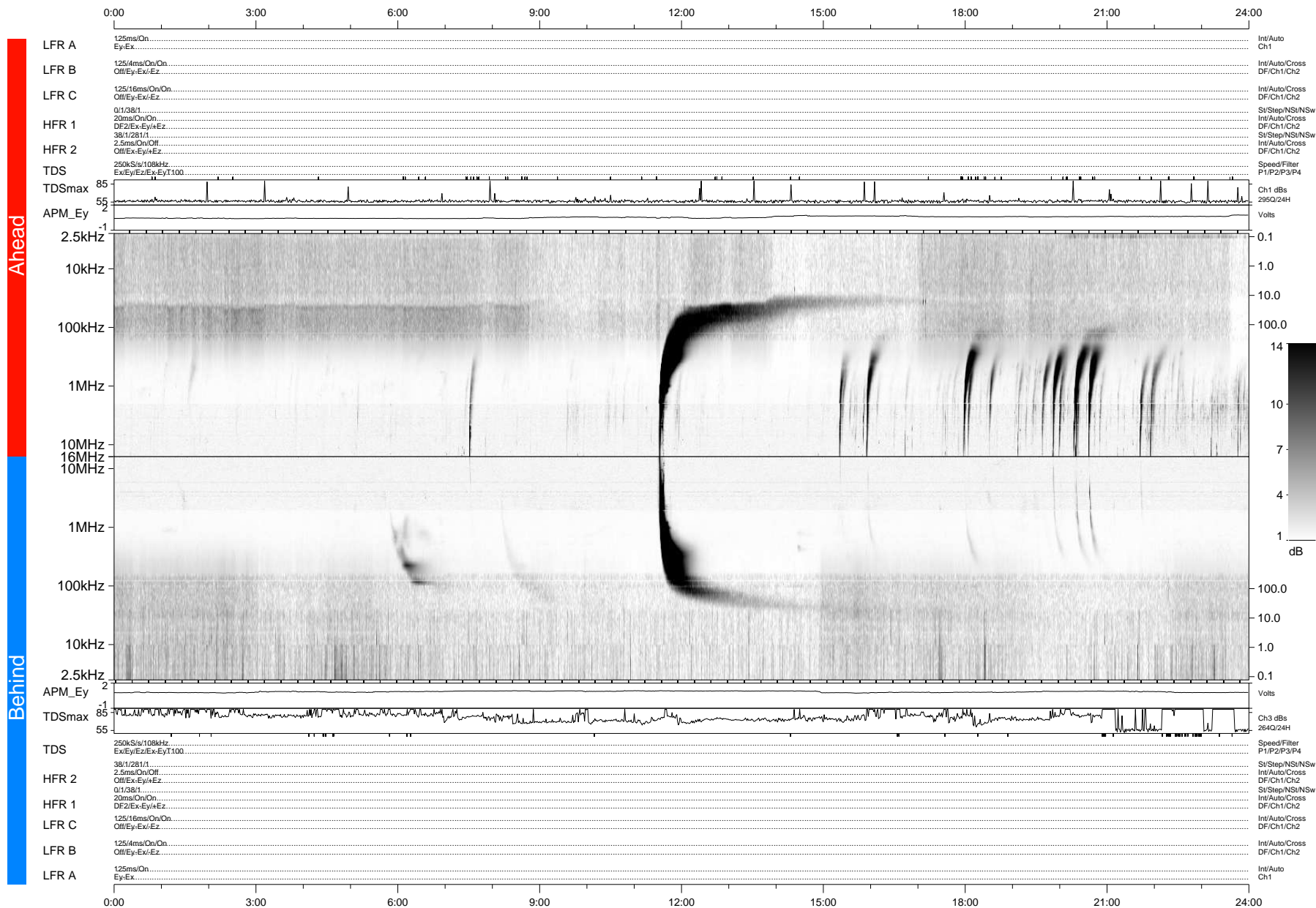


STEREO/WAVES Daily Summary - 12-Apr-2012 (DOY 103)

Ahead source file: swaves_ahead_2012_103_1_04.fin (Recovery: 100.0% HK, 109% Pkts)
 Ahead PSE Angle: 111.8°

DPU up 982.4d, V410d14



Behind PSE Angle: -118.6°
 Behind source file: swaves_behind_2012_103_1_04.fin (Recovery: 100.0% HK, 104% Pkts)

Time (UTC)

file: stereo_swaves_daily-summary_gray-status_20120412_v04 DPU up 1058.2d, V410d15
 made by: space.umn.edu on macOS with IDL 8.8.2 on 2022-10-14 05:50:11, with TMLib V945 / dynspec V311