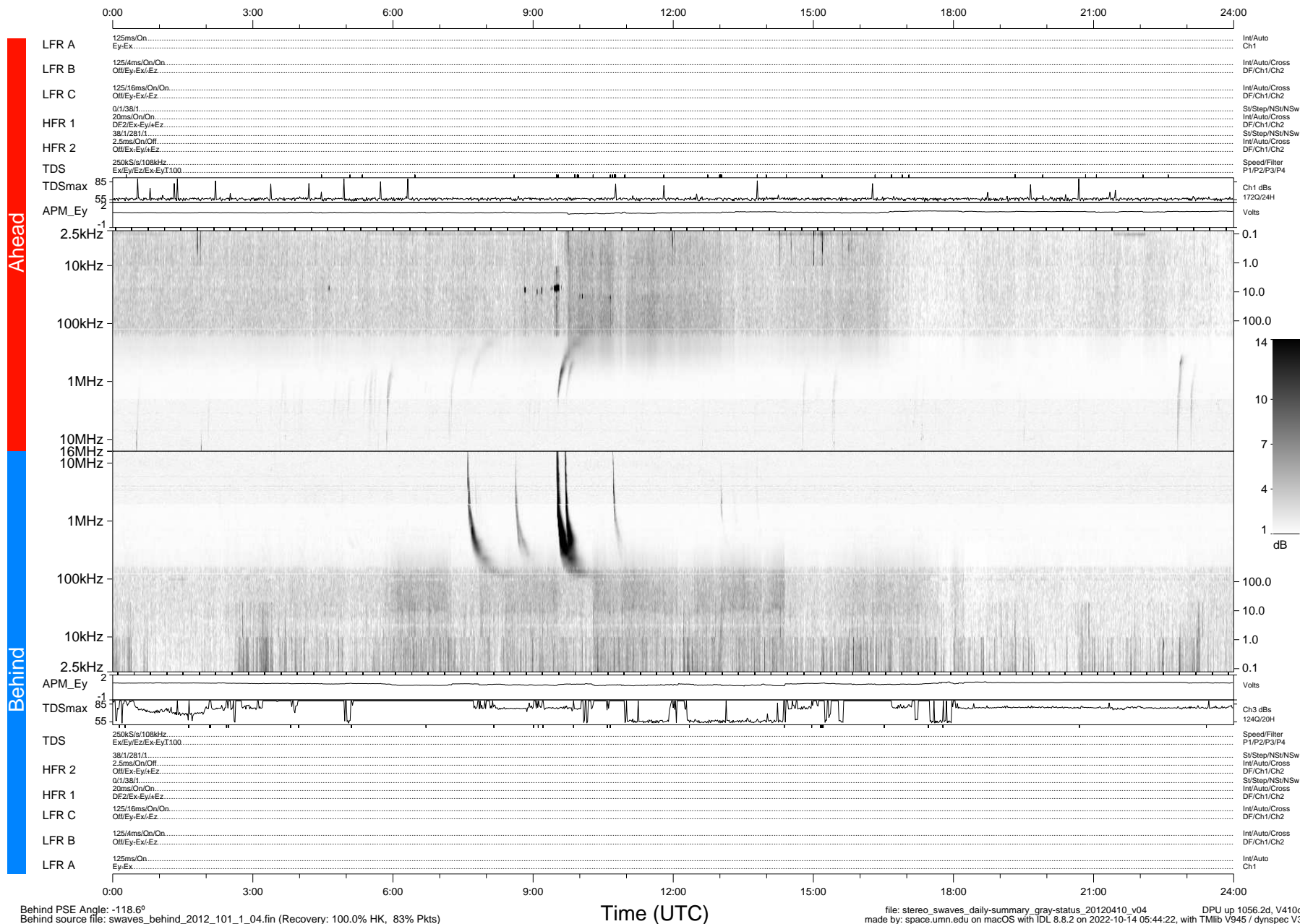


STEREO/WAVES Daily Summary - 10-Apr-2012 (DOY 101)

Ahead source file: swaves_ahead_2012_101_1_04.fin (Recovery: 100.0% HK, 91% Pkts)
 Ahead PSE Angle: 111.7°

DPU up 980.4d, V410d14



Behind PSE Angle: -118.6°
 Behind source file: swaves_behind_2012_101_1_04.fin (Recovery: 100.0% HK, 83% Pkts)

file: stereo_swaves_daily-summary_gray-status_20120410_v04 DPU up 1056.2d, V410d15
 made by: space.umn.edu on macOS with IDL 8.8.2 on 2022-10-14 05:44:22, with Tlib V945 / dynspec V311