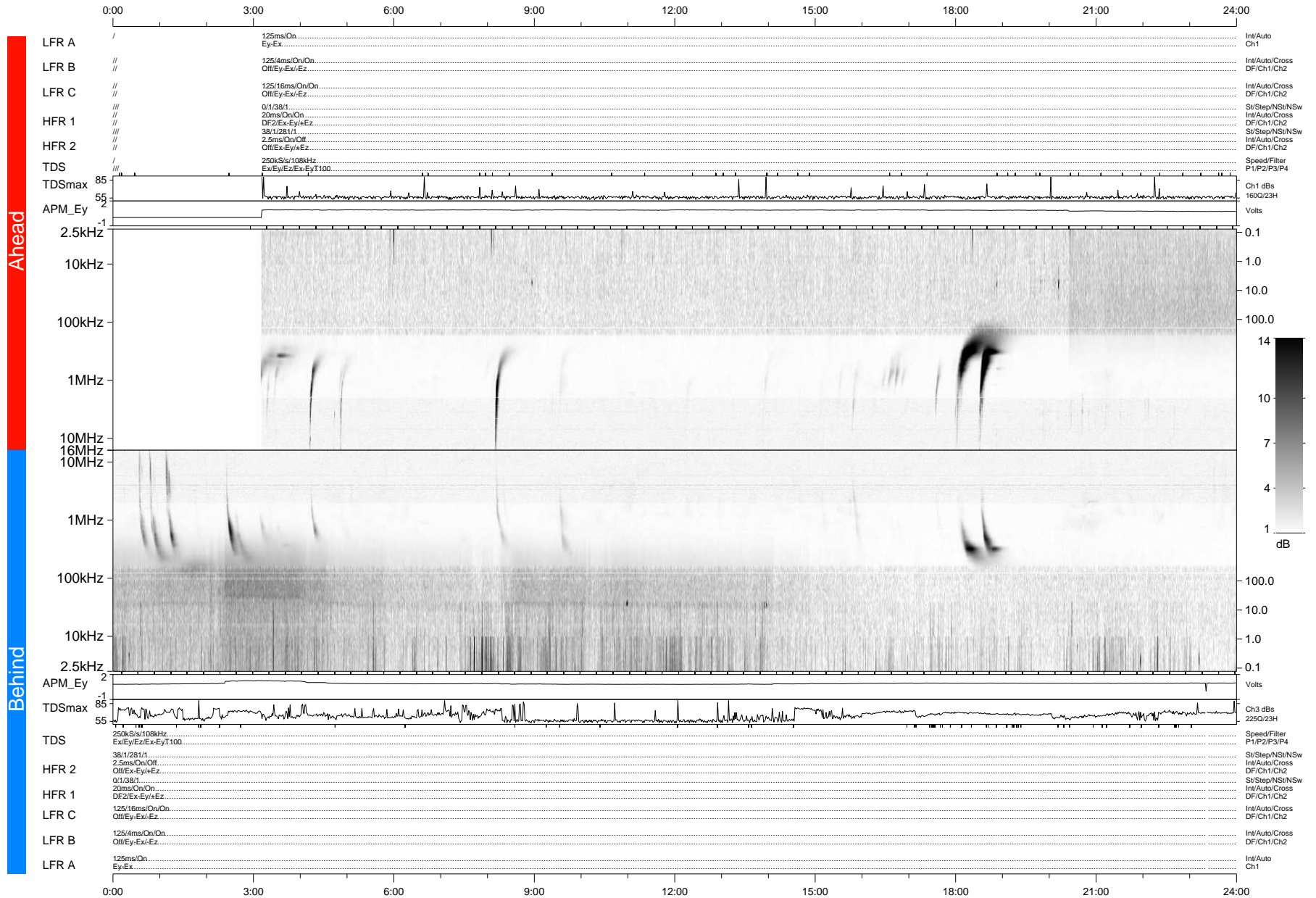


STEREO/WAVES Daily Summary - 01-Mar-2012 (DOY 061)

Ahead source file: swaves_ahead_2012_061_1_05.fin (Recovery: 86.7% HK, 81% Pkts)
 Ahead PSE Angle: 109.2°

DPU up 940.4d, V410d14



Behind PSE Angle: -117.5°
 Behind source file: swaves_behind_2012_061_1_05.fin (Recovery: 99.9% HK, 99% Pkts)

Time (UTC)

file: stereo_swaves_daily-summary_gray-status_20120301_v04 DPU up 1016.2d, V410d15
 made by: space.umn.edu on macOS with IDL 8.8.2 on 2022-10-14 03:50:52, with TLib V945 / dynspec V311